

GPR101 Polyclonal Antibody
Catalog # AP70132

Specification

GPR101 Polyclonal Antibody - Product Information

Application	WB, IF
Primary Accession	Q96P66
Reactivity	Human, Mouse, Monkey
Host	Rabbit
Clonality	Polyclonal

GPR101 Polyclonal Antibody - Additional Information

Gene ID 83550

Other Names

GPR101; Probable G-protein coupled receptor 101

Dilution

WB~~Western Blot: 1/500 - 1/2000. Immunofluorescence: 1/200 - 1/1000. ELISA: 1/5000. Not yet tested in other applications.

IF~~1:50~200

Format

Liquid in PBS containing 50% glycerol, 0.5% BSA and 0.09% (W/V) sodium azide.

Storage Conditions

-20°C

GPR101 Polyclonal Antibody - Protein Information

Name GPR101

Function

Orphan receptor.

Cellular Location

Cell membrane; Multi-pass membrane protein.

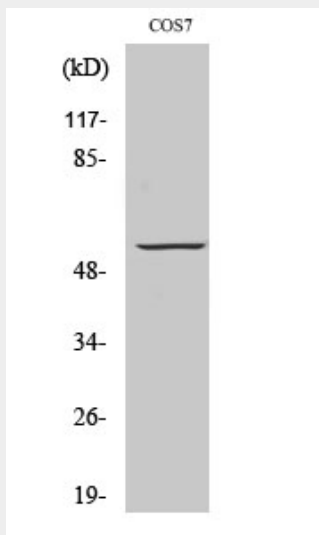
GPR101 Polyclonal Antibody - Protocols

Provided below are standard protocols that you may find useful for product applications.

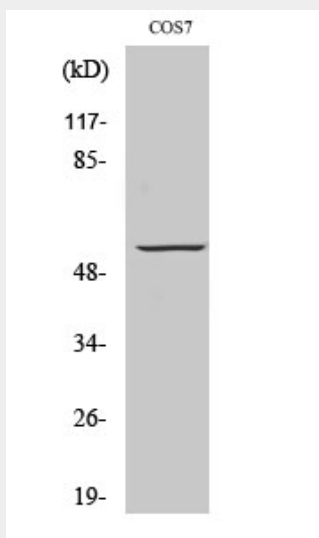
- [Western Blot](#)
- [Blocking Peptides](#)
- [Dot Blot](#)

- [Immunohistochemistry](#)
- [Immunofluorescence](#)
- [Immunoprecipitation](#)
- [Flow Cytometry](#)
- [Cell Culture](#)

GPR101 Polyclonal Antibody - Images



Western Blot analysis of various cells using GPR101 Polyclonal Antibody diluted at 1:500



Western Blot analysis of various cells using GPR101 Polyclonal Antibody diluted at 1:500

GPR101 Polyclonal Antibody - Background

Orphan receptor.