

GPR105 Polyclonal Antibody
Catalog # AP70135

Specification

GPR105 Polyclonal Antibody - Product Information

Application	WB
Primary Accession	Q15391
Reactivity	Human, Mouse, Rat
Host	Rabbit
Clonality	Polyclonal

GPR105 Polyclonal Antibody - Additional Information

Gene ID 9934

Other Names

P2RY14; GPR105; KIAA0001; P2Y purinoceptor 14; P2Y14; G-protein coupled receptor 105; UDP-glucose receptor

Dilution

WB~~Western Blot: 1/500 - 1/2000. Immunohistochemistry: 1/100 - 1/300. Immunofluorescence: 1/200 - 1/1000. ELISA: 1/10000. Not yet tested in other applications.

Format

Liquid in PBS containing 50% glycerol, 0.5% BSA and 0.09% (W/V) sodium azide.

Storage Conditions

-20°C

GPR105 Polyclonal Antibody - Protein Information

Name P2RY14

Synonyms GPR105, KIAA0001

Function

Receptor for UDP-glucose and other UDP-sugar coupled to G- proteins. Not activated by ATP, ADP, UTP or ATP.

Cellular Location

Cell membrane; Multi-pass membrane protein.

Tissue Location

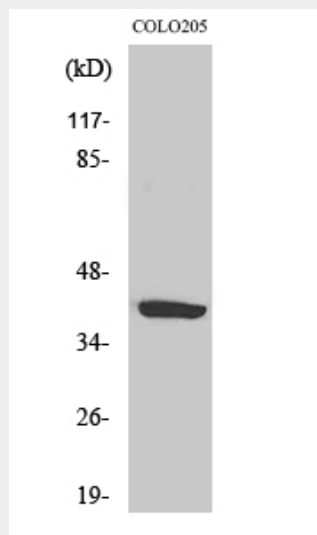
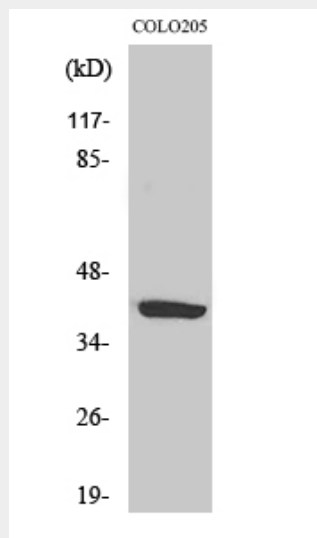
Highest expression in the placenta, adipose tissue, stomach and intestine, intermediate levels in the brain, spleen, lung and heart, lowest levels in the kidney

GPR105 Polyclonal Antibody - Protocols

Provided below are standard protocols that you may find useful for product applications.

- [Western Blot](#)
- [Blocking Peptides](#)
- [Dot Blot](#)
- [Immunohistochemistry](#)
- [Immunofluorescence](#)
- [Immunoprecipitation](#)
- [Flow Cytometry](#)
- [Cell Culture](#)

GPR105 Polyclonal Antibody - Images



GPR105 Polyclonal Antibody - Background

Receptor for UDP-glucose and other UDP-sugar coupled to G-proteins. Not activated by ATP, ADP,

UTP or ATP.