

GPR52 Polyclonal Antibody
Catalog # AP70208**Specification**

GPR52 Polyclonal Antibody - Product Information

Application	WB
Primary Accession	Q9Y2T5
Reactivity	Human
Host	Rabbit
Clonality	Polyclonal

GPR52 Polyclonal Antibody - Additional Information**Gene ID** 9293**Other Names**

GPR52; Probable G-protein coupled receptor 52

Dilution

WB~~Western Blot: 1/500 - 1/2000. ELISA: 1/10000. Not yet tested in other applications.

Format

Liquid in PBS containing 50% glycerol, 0.5% BSA and 0.09% (W/V) sodium azide.

Storage Conditions

-20°C

GPR52 Polyclonal Antibody - Protein Information**Name** GPR52 {ECO:0000303|PubMed:9931487, ECO:0000312|HGNC:HGNC:4508}**Function**

Gs-coupled receptor activated by antipsychotics reserpine leading to an increase in intracellular cAMP and its internalization (PubMed:24587241). May play a role in locomotor activity through modulation of dopamine, NMDA and ADORA2A-induced locomotor activity. These behavioral changes are accompanied by modulation of the dopamine receptor signaling pathway in striatum (PubMed:24587241). Modulates HTT level via cAMP-dependent but PKA independent mechanisms through activation of RAB39B that translocates HTT to the endoplasmic reticulum, thus avoiding proteasome degradation (PubMed:25738228).

Cellular Location

Cell membrane; Multi-pass membrane protein.

Tissue Location

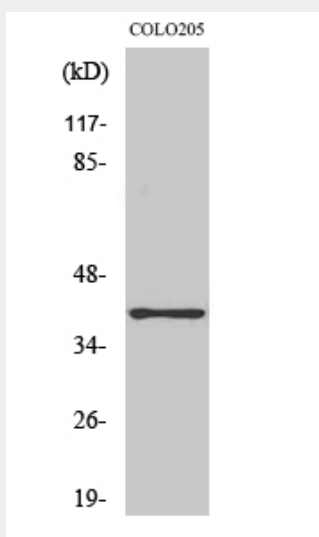
Expressed in brain, especially in striatum.

GPR52 Polyclonal Antibody - Protocols

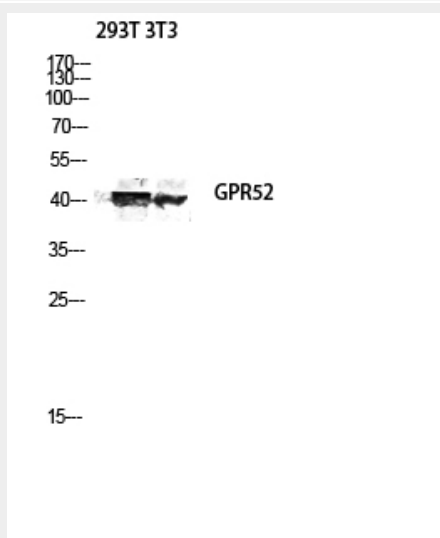
Provided below are standard protocols that you may find useful for product applications.

- [Western Blot](#)
- [Blocking Peptides](#)
- [Dot Blot](#)
- [Immunohistochemistry](#)
- [Immunofluorescence](#)
- [Immunoprecipitation](#)
- [Flow Cytometry](#)
- [Cell Culture](#)

GPR52 Polyclonal Antibody - Images



Western Blot analysis of various cells using GPR52 Polyclonal Antibody diluted at 1:2000



Western blot analysis of 293T 3T3 lysis using GPR52 antibody. Antibody was diluted at 1:2000

GPR52 Polyclonal Antibody - Background

Gs-coupled receptor activated by antipsychotics reserpine leading to an increase in intracellular cAMP and its internalization (PubMed:24587241). May play a role in locomotor activity through modulation of dopamine, NMDA and ADORA2A-induced locomotor activity. These behavioral changes are accompanied by modulation of the dopamine receptor signaling pathway in striatum (PubMed:24587241). Modulates HTT level via cAMP-dependent but PKA independent mechanisms through activation of RAB39B that translocates HTT to the endoplasmic reticulum, thus avoiding proteasome degradation (PubMed:25738228).