

**PKC nu Antibody (C-term)**  
**Purified Rabbit Polyclonal Antibody (Pab)**  
**Catalog # AP7025B****Specification**

---

**PKC nu Antibody (C-term) - Product Information**

Application	WB, IHC-P,E
Primary Accession	<a href="#">O94806</a>
Other Accession	<a href="#">Q8K1Y2</a>
Reactivity	Human
Predicted	Mouse
Host	Rabbit
Clonality	Polyclonal
Isotype	Rabbit IgG
Calculated MW	100471
Antigen Region	860-890

**PKC nu Antibody (C-term) - Additional Information****Gene ID** 23683**Other Names**

Serine/threonine-protein kinase D3, Protein kinase C nu type, Protein kinase EPK2, nPKC-nu, PRKD3, EPK2, PRKCN

**Target/Specificity**

This PKC nu antibody is generated from rabbits immunized with a KLH conjugated synthetic peptide between 860-890 amino acids from the C-terminal region of human PKC nu.

**Dilution**

WB~~1:1000  
IHC-P~~1:50~100

**Format**

Purified polyclonal antibody supplied in PBS with 0.09% (W/V) sodium azide. This antibody is prepared by Saturated Ammonium Sulfate (SAS) precipitation followed by dialysis against PBS.

**Storage**

Maintain refrigerated at 2-8°C for up to 2 weeks. For long term storage store at -20°C in small aliquots to prevent freeze-thaw cycles.

**Precautions**

PKC nu Antibody (C-term) is for research use only and not for use in diagnostic or therapeutic procedures.

**PKC nu Antibody (C-term) - Protein Information****Name** PRKD3

**Synonyms** EPK2, PRKCN

**Function** Converts transient diacylglycerol (DAG) signals into prolonged physiological effects, downstream of PKC. Involved in resistance to oxidative stress (By similarity).

**Cellular Location**

Cytoplasm. Membrane. Note=Translocation to the cell membrane is required for kinase activation

**Tissue Location**

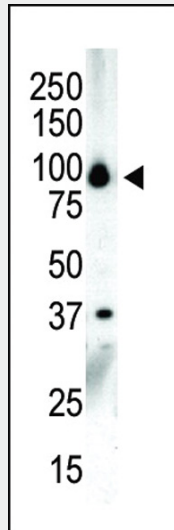
Ubiquitous.

**PKC nu Antibody (C-term) - Protocols**

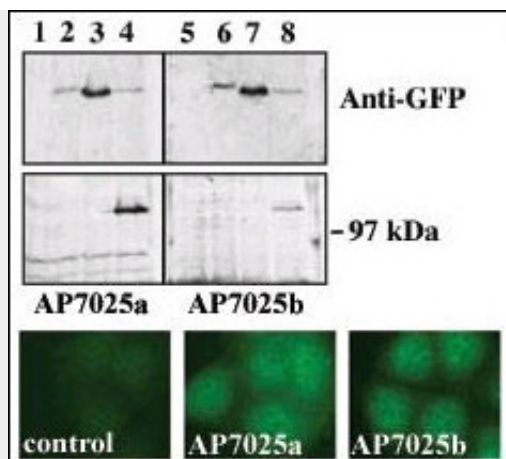
Provided below are standard protocols that you may find useful for product applications.

- [Western Blot](#)
- [Blocking Peptides](#)
- [Dot Blot](#)
- [Immunohistochemistry](#)
- [Immunofluorescence](#)
- [Immunoprecipitation](#)
- [Flow Cytometry](#)
- [Cell Culture](#)

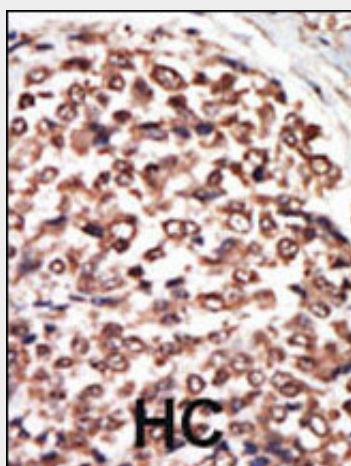
**PKC nu Antibody (C-term) - Images**



Western blot analysis of anti-PKCnu C-term Pab (Cat. #AP7025b) in NCI-H460 cell lysate. PKCnu (arrow) was detected using purified Pab. Secondary HRP-anti-rabbit was used for signal visualization with chemiluminescence.



Upper panel, western blot analysis of GFP fusion protein expression in Panc-1 cells by using an anti-GFP antibody. Lanes 1 and 5: non-transfected cells; lanes 2 and 6: GFP-PKD-transfected cells; lanes 3 and 7: GFP-PKD2-transfected cells; lanes 4 and 8: GFP-PKD3 transfected cells. Center panel, western blot analysis of GFP fusion protein expression in Panc-1 cells by using PKD3 N-term (AP7025a) and C-term (AP7025b) antibodies. Lower panel, indirect immunofluorescence analysis of GFP-PKD3 fusion protein expression in Panc-1 cells by using AP7025a and AP7025b antibodies. Data courtesy of Dr. Osvaldo Rey, University of California Los Angeles.



Formalin-fixed and paraffin-embedded human cancer tissue reacted with the primary antibody, which was peroxidase-conjugated to the secondary antibody, followed by AEC staining. This data demonstrates the use of this antibody for immunohistochemistry; clinical relevance has not been evaluated. BC = breast carcinoma; HC = hepatocarcinoma.

#### PKC nu Antibody (C-term) - Background

Protein kinase C (PKC) is a family of serine- and threonine-specific protein kinases that can be activated by calcium and second messenger diacylglycerol. PKC family members phosphorylate a wide variety of protein targets and are known to be involved in diverse cellular signaling pathways. PKC also serve as major receptors for phorbol esters, a class of tumor promoters. Each member of the PKC family has a specific expression profile and is believed to play distinct roles in cells. PKC nu is one of the PKC family members. This kinase can be activated rapidly by the agonists of G protein-coupled receptors. It resides in both cytoplasm and nucleus, and its nuclear accumulation is found to be dramatically enhanced in response to its activation. This kinase can also be activated after B-cell antigen receptor (BCR) engagement, which requires intact phospholipase C gamma and the involvement of other PKC family members.

#### PKC nu Antibody (C-term) - References

Yeaman, C., et al., Nat. Cell Biol. 6(2):106-112 (2004).  
Rey, O., et al., J. Biol. Chem. 278(26):23773-23785 (2003).  
Matthews, S.A., et al., J. Biol. Chem. 278(11):9086-9091 (2003).  
Bennasser, Y., et al., Virology 303(1):174-180 (2002).  
Bennasser, Y., et al., FASEB J. 16(6):546-554 (2002).