

HES-6 Polyclonal Antibody
Catalog # AP70310**Specification**

HES-6 Polyclonal Antibody - Product Information

Application	WB, IHC-P
Primary Accession	Q96HZ4
Reactivity	Human
Host	Rabbit
Clonality	Polyclonal

HES-6 Polyclonal Antibody - Additional Information**Gene ID** 55502**Other Names**

HES6; BHLHB41; Transcription cofactor HES-6; C-HAIRY1; Class B basic helix-loop-helix protein 41; bHLHb41; Hairy and enhancer of split 6

Dilution

WB~~Western Blot: 1/500 - 1/2000. Immunohistochemistry: 1/100 - 1/300. ELISA: 1/10000. Not yet tested in other applications.

IHC-P~~N/A

Format

Liquid in PBS containing 50% glycerol, 0.5% BSA and 0.09% (W/V) sodium azide.

Storage Conditions

-20°C

HES-6 Polyclonal Antibody - Protein Information**Name** HES6 {ECO:0000312|EMBL:AAK51634.1}**Synonyms** BHLHB41**Function**

Does not bind DNA itself but suppresses both HES1-mediated N box-dependent transcriptional repression and binding of HES1 to E box sequences. Also suppresses HES1-mediated inhibition of the heterodimer formed by ASCL1/MASH1 and TCF3/E47, allowing ASCL1 and TCF3 to up- regulate transcription in its presence. Promotes cell differentiation (By similarity).

Cellular Location

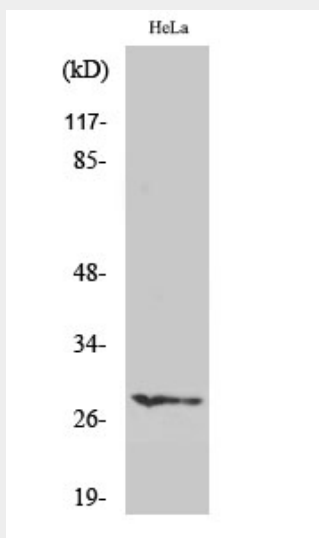
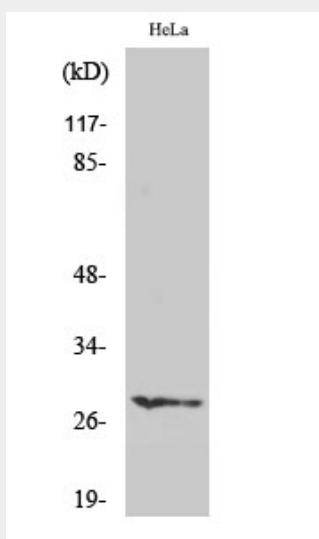
Nucleus.

HES-6 Polyclonal Antibody - Protocols

Provided below are standard protocols that you may find useful for product applications.

- [Western Blot](#)
- [Blocking Peptides](#)
- [Dot Blot](#)
- [Immunohistochemistry](#)
- [Immunofluorescence](#)
- [Immunoprecipitation](#)
- [Flow Cytometry](#)
- [Cell Culture](#)

HES-6 Polyclonal Antibody - Images



HES-6 Polyclonal Antibody - Background

Does not bind DNA itself but suppresses both HES1- mediated N box-dependent transcriptional repression and binding of HES1 to E box sequences. Also suppresses HES1-mediated inhibition of the heterodimer formed by ASCL1/MASH1 and TCF3/E47, allowing ASCL1 and TCF3 to up-regulate

transcription in its presence. Promotes cell differentiation (By similarity).