

**MOB4A Antibody (C-term)**  
**Purified Rabbit Polyclonal Antibody (Pab)**  
**Catalog # AP7031b****Specification**

---

**MOB4A Antibody (C-term) - Product Information**

Application	WB, IHC-P, IF,E
Primary Accession	<a href="#">Q7L9L4</a>
Other Accession	<a href="#">Q8BPB0</a> , <a href="#">Q3T1J9</a> , <a href="#">Q921Y0</a> , <a href="#">Q9H8S9</a>
Reactivity	Human, Mouse
Predicted	Rat
Host	Rabbit
Clonality	Polyclonal
Isotype	Rabbit IgG
Antigen Region	177-206

**MOB4A Antibody (C-term) - Additional Information****Gene ID** 92597**Other Names**

MOB kinase activator 1B, Mob1 homolog 1A, Mob1A, Mob1B, Mps one binder kinase activator-like 1A, MOB1B, MOB4A, MOBKL1A

**Target/Specificity**

This MOB4A antibody is generated from rabbits immunized with a KLH conjugated synthetic peptide between 177-206 amino acids from the C-terminal region of human MOB4A.

**Dilution**WB~~1:1000  
IHC-P~~1:10~50  
IF~~1:10~50  
E~~Use at an assay dependent concentration.**Format**

Purified polyclonal antibody supplied in PBS with 0.09% (W/V) sodium azide. This antibody is prepared by Saturated Ammonium Sulfate (SAS) precipitation followed by dialysis against PBS.

**Storage**

Maintain refrigerated at 2-8°C for up to 2 weeks. For long term storage store at -20°C in small aliquots to prevent freeze-thaw cycles.

**Precautions**

MOB4A Antibody (C-term) is for research use only and not for use in diagnostic or therapeutic procedures.

**MOB4A Antibody (C-term) - Protein Information**

**Name** MOB1B ([HGNC:29801](#))

**Synonyms** MOB4A, MOBKL1A

**Function** Activator of LATS1/2 in the Hippo signaling pathway which plays a pivotal role in organ size control and tumor suppression by restricting proliferation and promoting apoptosis. The core of this pathway is composed of a kinase cascade wherein STK3/MST2 and STK4/MST1, in complex with its regulatory protein SAV1, phosphorylates and activates LATS1/2 in complex with its regulatory protein MOB1, which in turn phosphorylates and inactivates YAP1 oncoprotein and WWTR1/TAZ. Phosphorylation of YAP1 by LATS1/2 inhibits its translocation into the nucleus to regulate cellular genes important for cell proliferation, cell death, and cell migration. Stimulates the kinase activity of STK38L.

**Cellular Location**

Cytoplasm. Nucleus

**Tissue Location**

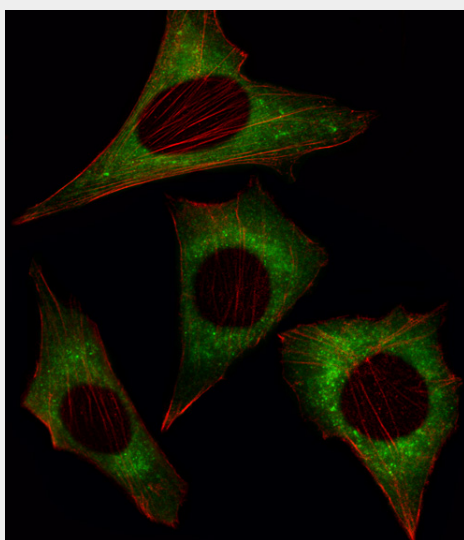
Adrenal gland, bone marrow, brain, lung, placenta, prostate, salivary gland, skeletal muscle, testis, thymus, thyroid gland, uterus, colon with mucosa, fetal brain and fetal liver

**MOB4A Antibody (C-term) - Protocols**

Provided below are standard protocols that you may find useful for product applications.

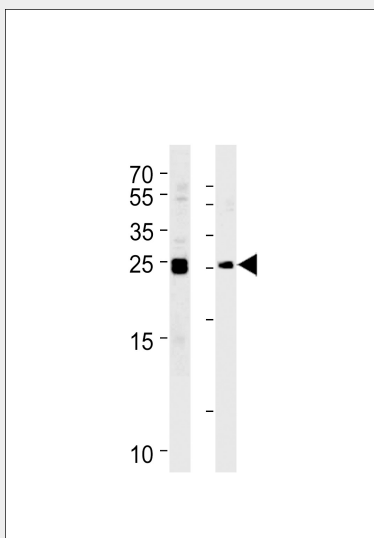
- [Western Blot](#)
- [Blocking Peptides](#)
- [Dot Blot](#)
- [Immunohistochemistry](#)
- [Immunofluorescence](#)
- [Immunoprecipitation](#)
- [Flow Cytometry](#)
- [Cell Culture](#)

**MOB4A Antibody (C-term) - Images**

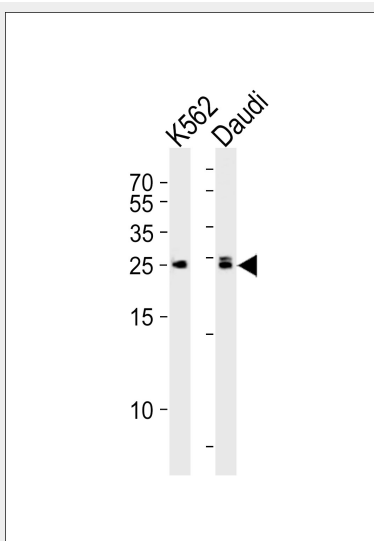


Fluorescent image of NIH/3T3 cell stained with MOB4A Antibody (C-term)(Cat#AP7031b). NIH/3T3 cells were fixed with 4% PFA (20 min), permeabilized with Triton X-100 (0.1%, 10 min), then

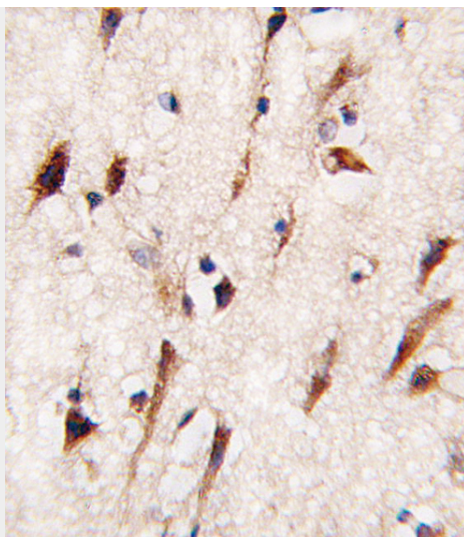
incubated with MOB4A primary antibody (1:25, 1 h at 37°C). For secondary antibody, Alexa Fluor® 488 conjugated donkey anti-rabbit antibody (green) was used (1:400, 50 min at 37°C). Cytoplasmic actin was counterstained with Alexa Fluor® 555 (red) conjugated Phalloidin (7 units/ml, 1 h at 37°C). MOB4A immunoreactivity is localized to Cytoplasm significantly.



MOB4A Antibody (C-term) (Cat.# AP7031b) western blot analysis in Daudi, K562 cell line lysates (35 µg/lane). This demonstrates the MOB4A antibody detected the MOB4A protein (arrow).



Western blot analysis of lysates from K562, Daudi cell line (from left to right), using MOB4A Antibody (C-term) (Cat. #AP7031b). AP7031b was diluted at 1:1000 at each lane. A goat anti-rabbit IgG H&L (HRP) at 1:5000 dilution was used as the secondary antibody. Lysates at 35 µg per lane.



Formalin-fixed and paraffin-embedded human brain tissue reacted with MOB4A antibody (C-term) (Cat.#AP7031b), which was peroxidase-conjugated to the secondary antibody, followed by DAB staining. This data demonstrates the use of this antibody for immunohistochemistry; clinical relevance has not been evaluated.

#### **MOB4A Antibody (C-term) - Background**

MOB4A is similar to the yeast Mob1 protein. Yeast Mob1 binds Mps1p, a protein kinase essential for spindle pole body duplication and mitotic checkpoint regulation. Mob4A regulates NDR1 and NDR2 kinase activity, widely expressed nuclear serine-threonine kinases that have been implicated in cell proliferation and/or tumor progression.

#### **MOB4A Antibody (C-term) - References**

Bichsel,S.J.J. Biol. Chem. 279 (34), 35228-35235 (2004) Devroe,E.,J. Biol. Chem. 279 (23), 24444-24451 (2004)

#### **MOB4A Antibody (C-term) - Citations**

- [Impact of nuclear YAP1 expression in residual cancer after neoadjuvant chemohormonal therapy with docetaxel for high-risk localized prostate cancer](#)
- [Cancer susceptibility and embryonic lethality in Mob1a/1b double-mutant mice.](#)
- [Mutual dependence of Mob1 and the chromosomal passenger complex for localization during mitosis.](#)