

**HORMAD1 Polyclonal Antibody**  
**Catalog # AP70390****Specification**

---

**HORMAD1 Polyclonal Antibody - Product Information**

Application	WB
Primary Accession	<a href="#">Q86X24</a>
Reactivity	Human
Host	Rabbit
Clonality	Polyclonal

**HORMAD1 Polyclonal Antibody - Additional Information****Gene ID** 84072**Other Names**HORMAD1; NOHMA; HORMA domain-containing protein 1; Cancer/testis antigen 46; CT46;  
Newborn ovary HORMA protein**Dilution**

WB~~Western Blot: 1/500 - 1/2000. ELISA: 1/10000. Not yet tested in other applications.

**Format**

Liquid in PBS containing 50% glycerol, 0.5% BSA and 0.09% (W/V) sodium azide.

**Storage Conditions**

-20°C

**HORMAD1 Polyclonal Antibody - Protein Information****Name** HORMAD1 ([HGNC:25245](#))**Function**

Plays a key role in meiotic progression. Regulates 3 different functions during meiosis: ensures that sufficient numbers of processed DNA double-strand breaks (DSBs) are available for successful homology search by increasing the steady-state numbers of single- stranded DSB ends. Promotes synaptonemal-complex formation independently of its role in homology search. Plays a key role in the male mid-pachytene checkpoint and the female meiotic prophase checkpoint: required for efficient build-up of ATR activity on unsynapsed chromosome regions, a process believed to form the basis of meiotic silencing of unsynapsed chromatin (MSUC) and meiotic prophase quality control in both sexes.

**Cellular Location**

Nucleus {ECO:0000250|UniProtKB:Q9D5T7}. Chromosome {ECO:0000250|UniProtKB:Q9D5T7}. Note=Preferentially localizes to unsynapsed or desynapsed chromosomal regions during the prophase I stage of meiosis. TRIP13 is required for depletion from synapsed chromosomes. The expression of the phosphorylated form at Ser- 377 is restricted to unsynapsed chromosomal regions (By similarity) {ECO:0000250|UniProtKB:Q9D5T7}

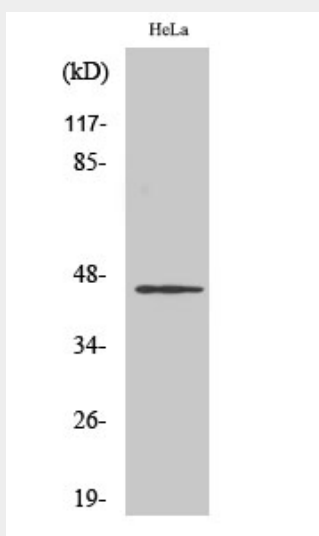
**Tissue Location**

Testis-specific. Over-expressed in carcinomas.

**HORMAD1 Polyclonal Antibody - Protocols**

Provided below are standard protocols that you may find useful for product applications.

- [Western Blot](#)
- [Blocking Peptides](#)
- [Dot Blot](#)
- [Immunohistochemistry](#)
- [Immunofluorescence](#)
- [Immunoprecipitation](#)
- [Flow Cytometry](#)
- [Cell Culture](#)

**HORMAD1 Polyclonal Antibody - Images****HORMAD1 Polyclonal Antibody - Background**

Plays a key role in meiotic progression. Regulates 3 different functions during meiosis: ensures that sufficient numbers of processed DNA double-strand breaks (DSBs) are available for successful homology search by increasing the steady-state numbers of single-stranded DSB ends. Promotes synaptonemal-complex formation independently of its role in homology search. Plays a key role in the male mid-pachytene checkpoint and the female meiotic prophase checkpoint: required for efficient build-up of ATR activity on unsynapsed chromosome regions, a process believed to form the basis of meiotic silencing of unsynapsed chromatin (MSUC) and meiotic prophase quality control in both sexes.