

HPK1 Polyclonal Antibody
Catalog # AP70408**Specification****HPK1 Polyclonal Antibody - Product Information**

Application	WB, IHC-P
Primary Accession	Q92918
Reactivity	Human, Mouse
Host	Rabbit
Clonality	Polyclonal

HPK1 Polyclonal Antibody - Additional Information**Gene ID** 11184**Other Names**

MAP4K1; HPK1; Mitogen-activated protein kinase kinase kinase kinase 1; Hematopoietic progenitor kinase; MAPK/ERK kinase kinase kinase 1; MEK kinase kinase 1; MEKKK 1

DilutionWB~~Western Blot: 1/500 - 1/2000. ELISA: 1/10000. Not yet tested in other applications.
IHC-P~~N/A**Format**

Liquid in PBS containing 50% glycerol, 0.5% BSA and 0.09% (W/V) sodium azide.

Storage Conditions

-20°C

HPK1 Polyclonal Antibody - Protein Information**Name** MAP4K1 ([HGNC:6863](#))**Synonyms** HPK1**Function**

Serine/threonine-protein kinase, which plays a role in the response to environmental stress (PubMed:24362026). Appears to act upstream of the JUN N-terminal pathway (PubMed:8824585). Activator of the Hippo signaling pathway which plays a pivotal role in organ size control and tumor suppression by restricting proliferation and promoting apoptosis. MAP4Ks act in parallel to and are partially redundant with STK3/MST2 and STK4/MST2 in the phosphorylation and activation of LATS1/2, and establish MAP4Ks as components of the expanded Hippo pathway (PubMed:26437443). May play a role in hematopoietic lineage decisions and growth regulation (PubMed:24362026, PubMed:8824585). Together with

CLNK, it enhances CD3-triggered activation of T-cells and subsequent IL2 production (By similarity).

Tissue Location

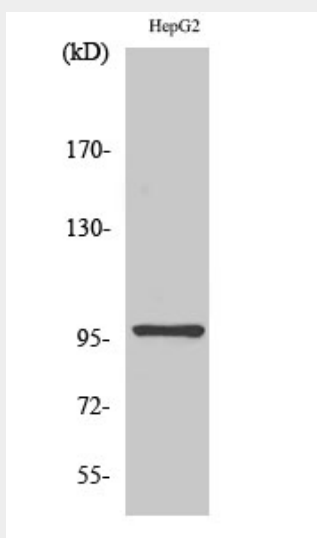
Expressed primarily in hematopoietic organs, including bone marrow, spleen and thymus. Also expressed at very low levels in lung, kidney, mammary glands and small intestine

HPK1 Polyclonal Antibody - Protocols

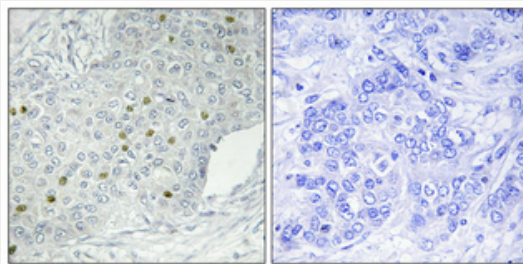
Provided below are standard protocols that you may find useful for product applications.

- [Western Blot](#)
- [Blocking Peptides](#)
- [Dot Blot](#)
- [Immunohistochemistry](#)
- [Immunofluorescence](#)
- [Immunoprecipitation](#)
- [Flow Cytometry](#)
- [Cell Culture](#)

HPK1 Polyclonal Antibody - Images



Western Blot analysis of various cells using HPK1 Polyclonal Antibody diluted at 1:1000



Immunohistochemical analysis of paraffin-embedded Human breast cancer. Antibody was diluted at 1:100(4°,overnight). High-pressure and temperature Tris-EDTA,pH8.0 was used for antigen retrieval. Negative contrl (right) obtained from antibody was pre-absorbed by immunogen peptide.

HPK1 Polyclonal Antibody - Background

Serine/threonine-protein kinase, which may play a role in the response to environmental stress. Appears to act upstream of the JUN N-terminal pathway. May play a role in hematopoietic lineage decisions and growth regulation. Able to autophosphorylate.