

PKLR Antibody (N-term)
Purified Rabbit Polyclonal Antibody (Pab)
Catalog # AP7043a**Specification**

PKLR Antibody (N-term) - Product Information

Application	IHC-P, WB,E
Primary Accession	P30613
Reactivity	Human
Host	Rabbit
Clonality	Polyclonal
Isotype	Rabbit IgG
Calculated MW	61830
Antigen Region	1-30

PKLR Antibody (N-term) - Additional Information**Gene ID** 5313**Other Names**

Pyruvate kinase PKLR, Pyruvate kinase 1, Pyruvate kinase isozymes L/R, R-type/L-type pyruvate kinase, Red cell/liver pyruvate kinase, PKLR, PK1, PKL

Target/Specificity

This PKLR antibody is generated from rabbits immunized with a KLH conjugated synthetic peptide between 1-30 amino acids from the N-terminal region of human PKLR.

Dilution

IHC-P~~1:50~100

WB~~1:1000

E~~Use at an assay dependent concentration.

Format

Purified polyclonal antibody supplied in PBS with 0.09% (W/V) sodium azide. This antibody is purified through a protein A column, followed by peptide affinity purification.

Storage

Maintain refrigerated at 2-8°C for up to 2 weeks. For long term storage store at -20°C in small aliquots to prevent freeze-thaw cycles.

Precautions

PKLR Antibody (N-term) is for research use only and not for use in diagnostic or therapeutic procedures.

PKLR Antibody (N-term) - Protein Information**Name** PKLR

Synonyms PK1, PKL

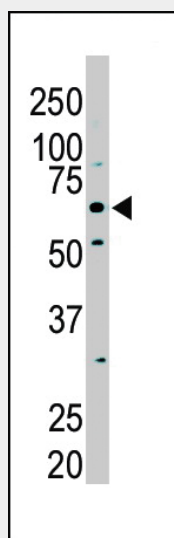
Function Pyruvate kinase that catalyzes the conversion of phosphoenolpyruvate to pyruvate with the synthesis of ATP, and which plays a key role in glycolysis.

PKLR Antibody (N-term) - Protocols

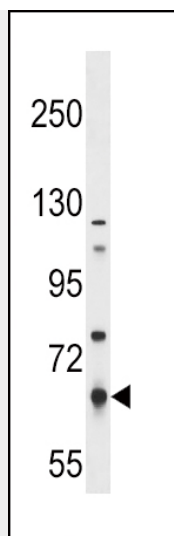
Provided below are standard protocols that you may find useful for product applications.

- [Western Blot](#)
- [Blocking Peptides](#)
- [Dot Blot](#)
- [Immunohistochemistry](#)
- [Immunofluorescence](#)
- [Immunoprecipitation](#)
- [Flow Cytometry](#)
- [Cell Culture](#)

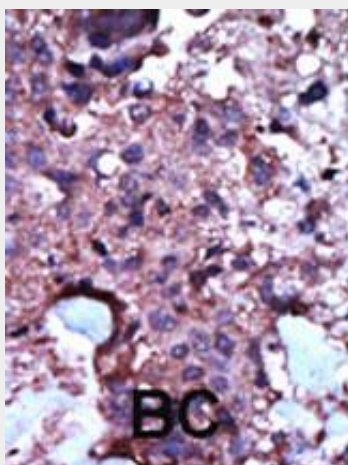
PKLR Antibody (N-term) - Images



The anti-PKLR Pab (Cat. #AP7043a) is used in Western blot to detect PKLR in NIH/3T3 cell lysate.



PKLR Antibody (S8) (Cat. #AP7043a) western blot analysis in NCI-H292 cell line lysates (35ug/lane). This demonstrates the PKLR antibody detected the PKLR protein (arrow).



Formalin-fixed and paraffin-embedded human cancer tissue reacted with the primary antibody, which was peroxidase-conjugated to the secondary antibody, followed by AEC staining. This data demonstrates the use of this antibody for immunohistochemistry; clinical relevance has not been evaluated. BC = breast carcinoma; HC = hepatocarcinoma.

PKLR Antibody (N-term) - Background

PKLR is a pyruvate kinase that catalyzes the production of phosphoenolpyruvate from pyruvate and ATP. Defects in this enzyme, due to gene mutations or genetic variations, are the common cause of chronic hereditary nonspherocytic hemolytic anemia (CNHA or HNHA).

PKLR Antibody (N-term) - References

Wang, H., et al., Diabetes 51(9):2861-2865 (2002). Valentini, G., et al., J. Biol. Chem. 277(26):23807-23814 (2002). Mateu, E., et al., Hum. Genet. 110(6):532-544 (2002). Indo, Y., et al., Hum. Mutat. 18(4):308-318 (2001). Acan, N.L., et al., J. Enzym. Inhib. 16(5):457-464 (2001).