

IGSF4B Polyclonal Antibody
Catalog # AP70477**Specification**

IGSF4B Polyclonal Antibody - Product Information

Application	WB
Primary Accession	Q8N126
Reactivity	Human, Mouse, Rat
Host	Rabbit
Clonality	Polyclonal

IGSF4B Polyclonal Antibody - Additional Information**Gene ID** 57863**Other Names**

CADM3; IGSF4B; NECL1; SYNCAM3; TSLL1; Cell adhesion molecule 3; Brain immunoglobulin receptor; Immunoglobulin superfamily member 4B; IgSF4B; Nectin-like protein 1; NECL-1; Synaptic cell adhesion molecule 3; SyncAM3; TSLC1-like protein 1; TS

Dilution

WB~~Western Blot: 1/500 - 1/2000. Immunohistochemistry: 1/100 - 1/300. Immunofluorescence: 1/200 - 1/1000. ELISA: 1/5000. Not yet tested in other applications.

Format

Liquid in PBS containing 50% glycerol, 0.5% BSA and 0.09% (W/V) sodium azide.

Storage Conditions

-20°C

IGSF4B Polyclonal Antibody - Protein Information**Name** CADM3**Synonyms** IGSF4B, NECL1, SYNCAM3, TSLL1**Function**

Involved in the cell-cell adhesion. Has both calcium- independent homophilic cell-cell adhesion activity and calcium- independent heterophilic cell-cell adhesion activity with IGSF4, NECTIN1 and NECTIN3. Interaction with EPB41L1 may regulate structure or function of cell-cell junctions (By similarity).

Cellular Location

Cell membrane {ECO:0000250|UniProtKB:Q99N28}; Single-pass type I membrane protein {ECO:0000250|UniProtKB:Q99N28} Cell junction {ECO:0000250|UniProtKB:Q99N28}

Tissue Location

Isoform 1 is expressed mainly in adult and fetal brain. Isoform 2 is highly expressed in adult brain

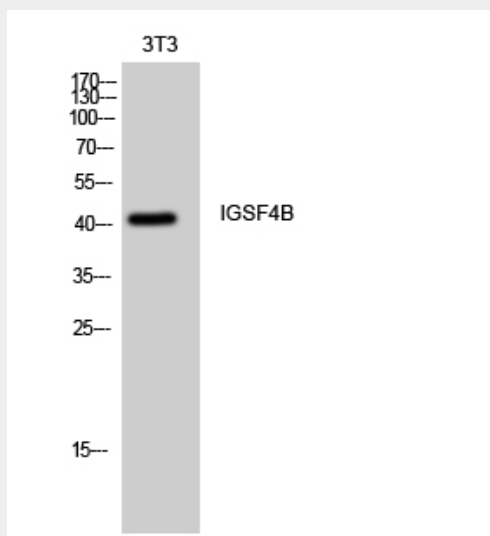
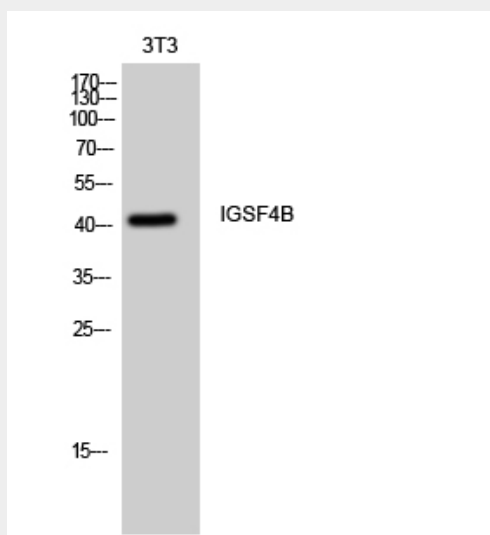
and weakly expressed in placenta. In brain, Isoform 2 is highly expressed in cerebellum.

IGSF4B Polyclonal Antibody - Protocols

Provided below are standard protocols that you may find useful for product applications.

- [Western Blot](#)
- [Blocking Peptides](#)
- [Dot Blot](#)
- [Immunohistochemistry](#)
- [Immunofluorescence](#)
- [Immunoprecipitation](#)
- [Flow Cytometry](#)
- [Cell Culture](#)

IGSF4B Polyclonal Antibody - Images



IGSF4B Polyclonal Antibody - Background

Involved in the cell-cell adhesion. Has both calcium- independent homophilic cell-cell adhesion activity and calcium- independent heterophilic cell-cell adhesion activity with IGSF4, NECTIN1 and NECTIN3. Interaction with EPB41L1 may regulate structure or function of cell-cell junctions (By similarity).