

**IL-21 Polyclonal Antibody**  
**Catalog # AP70510****Specification**

---

**IL-21 Polyclonal Antibody - Product Information**

Application	WB
Primary Accession	<a href="#">Q9HBE4</a>
Reactivity	Human, Mouse
Host	Rabbit
Clonality	Polyclonal

**IL-21 Polyclonal Antibody - Additional Information****Gene ID** 59067**Other Names**

IL21; Interleukin-21; IL-21; Za11

**Dilution**

WB~~Western Blot: 1/500 - 1/2000. ELISA: 1/20000. Not yet tested in other applications.

**Format**

Liquid in PBS containing 50% glycerol, 0.5% BSA and 0.09% (W/V) sodium azide.

**Storage Conditions**

-20°C

**IL-21 Polyclonal Antibody - Protein Information****Name** IL21 ([HGNC:6005](#))**Function**

Cytokine with immunoregulatory activity. May promote the transition between innate and adaptive immunity. Induces the production of IgG(1) and IgG(3) in B-cells (By similarity). Implicated in the generation and maintenance of T follicular helper (Tfh) cells and the formation of germinal-centers. Together with IL6, control the early generation of Tfh cells and are critical for an effective antibody response to acute viral infection (By similarity). May play a role in proliferation and maturation of natural killer (NK) cells in synergy with IL15. May regulate proliferation of mature B- and T-cells in response to activating stimuli. In synergy with IL15 and IL18 stimulates interferon gamma production in T-cells and NK cells (PubMed:<a href="http://www.uniprot.org/citations/11081504" target="\_blank">11081504</a>, PubMed:<a href="http://www.uniprot.org/citations/15178704" target="\_blank">15178704</a>). During T-cell mediated immune response may inhibit dendritic cells (DC) activation and maturation (By similarity).

**Cellular Location**

Secreted.

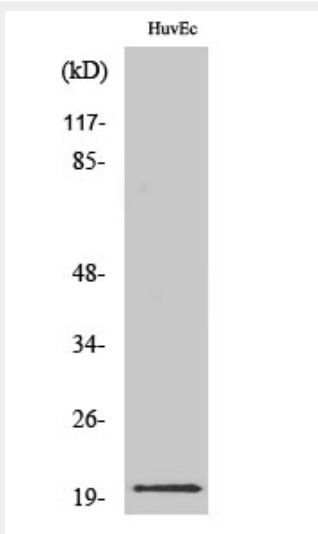
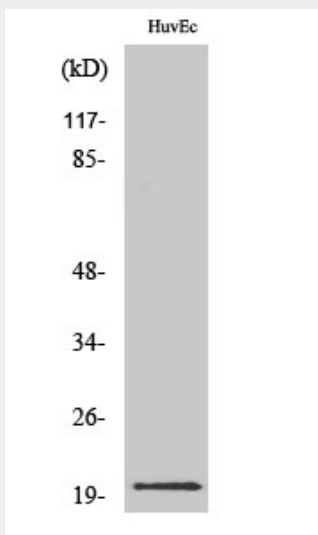
**Tissue Location**

Expressed in activated CD4-positive T-cells but not in CD8-positive T-cells, B-cells, or monocytes

**IL-21 Polyclonal Antibody - Protocols**

Provided below are standard protocols that you may find useful for product applications.

- [Western Blot](#)
- [Blocking Peptides](#)
- [Dot Blot](#)
- [Immunohistochemistry](#)
- [Immunofluorescence](#)
- [Immunoprecipitation](#)
- [Flow Cytometry](#)
- [Cell Culture](#)

**IL-21 Polyclonal Antibody - Images**

**IL-21 Polyclonal Antibody - Background**

Cytokine with immunoregulatory activity. May promote the transition between innate and adaptive immunity. Induces the production of IgG(1) and IgG(3) in B-cells (By similarity). May play a role in proliferation and maturation of natural killer (NK) cells in synergy with IL15. May regulate proliferation of mature B- and T-cells in response to activating stimuli. In synergy with IL15 and IL18 stimulates interferon gamma production in T-cells and NK cells. During T-cell mediated immune response may inhibit dendritic cells (DC) activation and maturation.