

IL-3R β Polyclonal Antibody
Catalog # AP70516**Specification**

IL-3R β Polyclonal Antibody - Product Information

Application	WB, IHC-P
Primary Accession	P32927
Reactivity	Human, Mouse, Rat
Host	Rabbit
Clonality	Polyclonal

IL-3R β Polyclonal Antibody - Additional Information**Gene ID** 1439**Other Names**

CSF2RB; IL3RB; IL5RB; Cytokine receptor common subunit beta; CDw131; GM-CSF/IL-3/IL-5 receptor common beta subunit; CD antigen CD131

Dilution

WB~~Western Blot: 1/500 - 1/2000. Immunohistochemistry: 1/100 - 1/300. ELISA: 1/5000. Not yet tested in other applications.

IHC-P~~N/A

Format

Liquid in PBS containing 50% glycerol, 0.5% BSA and 0.09% (W/V) sodium azide.

Storage Conditions

-20°C

IL-3R β Polyclonal Antibody - Protein Information**Name** CSF2RB**Synonyms** IL3RB, IL5RB**Function**

Cell surface receptor that plays a role in immune response and controls the production and differentiation of hematopoietic progenitor cells into lineage-restricted cells. Acts by forming a heterodimeric receptor through interaction with different partners such as IL3RA, IL5RA or CSF2RA (PubMed:<<http://www.uniprot.org/citations/1495999>>1495999). In turn, participates in various signaling pathways including interleukin-3, interleukin-5 and granulocyte-macrophage colony-stimulating factor/CSF2 pathways. In unstimulated conditions, interacts constitutively with JAK1 and ligand binding leads to JAK1 stimulation and subsequent activation of the JAK- STAT pathway (PubMed:<<http://www.uniprot.org/citations/9516124>>9516124).

Cellular Location

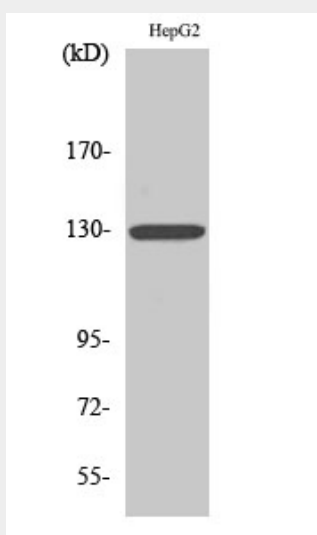
Membrane; Single-pass type I membrane protein.

IL-3R β Polyclonal Antibody - Protocols

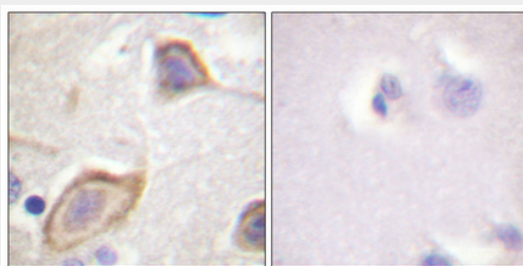
Provided below are standard protocols that you may find useful for product applications.

- [Western Blot](#)
- [Blocking Peptides](#)
- [Dot Blot](#)
- [Immunohistochemistry](#)
- [Immunofluorescence](#)
- [Immunoprecipitation](#)
- [Flow Cytometry](#)
- [Cell Culture](#)

IL-3R β Polyclonal Antibody - Images



Western Blot analysis of various cells using IL-3R β Polyclonal Antibody



Immunohistochemical analysis of paraffin-embedded Human brain. Antibody was diluted at 1:100(4°,overnight). High-pressure and temperature Tris-EDTA,pH8.0 was used for antigen retrieval. Negative control (right) obtained from antibody was pre-absorbed by immunogen peptide.

IL-3R β Polyclonal Antibody - Background

High affinity receptor for interleukin-3, interleukin-5 and granulocyte-macrophage colony-stimulating factor.