

IPP-2 Polyclonal Antibody
Catalog # AP70569**Specification**

IPP-2 Polyclonal Antibody - Product Information

Application	WB, IHC-P
Primary Accession	P41236
Reactivity	Human, Mouse, Rat
Host	Rabbit
Clonality	Polyclonal

IPP-2 Polyclonal Antibody - Additional Information**Gene ID** 5504**Other Names**

PPP1R2; IPP2; Protein phosphatase inhibitor 2; IPP-2

Dilution

WB~~Western Blot: 1/500 - 1/2000. Immunohistochemistry: 1/100 - 1/300. ELISA: 1/5000. Not yet tested in other applications.

IHC-P~~N/A

Format

Liquid in PBS containing 50% glycerol, 0.5% BSA and 0.09% (W/V) sodium azide.

Storage Conditions

-20°C

IPP-2 Polyclonal Antibody - Protein Information**Name** PPP1R2**Synonyms** IPP2**Function**

Inhibitor of protein-phosphatase 1.

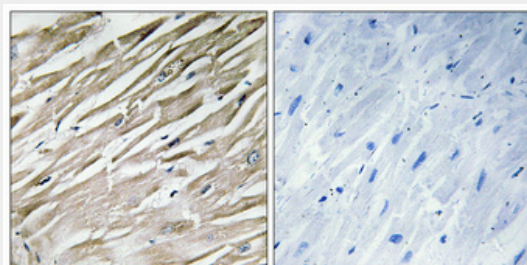
IPP-2 Polyclonal Antibody - Protocols

Provided below are standard protocols that you may find useful for product applications.

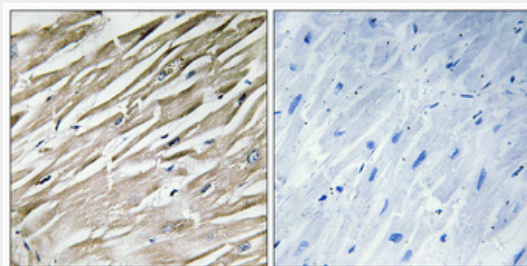
- [Western Blot](#)
- [Blocking Peptides](#)
- [Dot Blot](#)
- [Immunohistochemistry](#)

- [Immunofluorescence](#)
- [Immunoprecipitation](#)
- [Flow Cytometry](#)
- [Cell Culture](#)

IPP-2 Polyclonal Antibody - Images



Immunohistochemical analysis of paraffin-embedded Human heart. Antibody was diluted at 1:100(4°,overnight). High-pressure and temperature Tris-EDTA,pH8.0 was used for antigen retrieval. Negative contrl (right) obtained from antibody was pre-absorbed by immunogen peptide.



Immunohistochemical analysis of paraffin-embedded Human heart. Antibody was diluted at 1:100(4°,overnight). High-pressure and temperature Tris-EDTA,pH8.0 was used for antigen retrieval. Negative contrl (right) obtained from antibody was pre-absorbed by immunogen peptide.

IPP-2 Polyclonal Antibody - Background

Inhibitor of protein-phosphatase 1.