

**KIST (KIS) Antibody (C-term)**  
**Purified Rabbit Polyclonal Antibody (Pab)**  
**Catalog # AP7063b**

**Specification**

---

**KIST (KIS) Antibody (C-term) - Product Information**

Application	WB,E
Primary Accession	<a href="#">O8TAS1</a>
Other Accession	<a href="#">O63285</a> , <a href="#">NP_787062</a>
Reactivity	Human, Mouse
Predicted	Rat
Host	Rabbit
Clonality	Polyclonal
Isotype	Rabbit IgG
Calculated MW	46546
Antigen Region	265-295

**KIST (KIS) Antibody (C-term) - Additional Information**

**Gene ID** 127933

**Other Names**

Serine/threonine-protein kinase Kist, Kinase interacting with stathmin, PAM COOH-terminal interactor protein 2, P-CIP2, U2AF homology motif kinase 1, UHMK1, KIS, KIST

**Target/Specificity**

This KIST (KIS) antibody is generated from rabbits immunized with a KLH conjugated synthetic peptide between 265-295 amino acids from the C-terminal region of human KIST (KIS).

**Dilution**

WB~~1:1000  
E~~Use at an assay dependent concentration.

**Format**

Purified polyclonal antibody supplied in PBS with 0.09% (W/V) sodium azide. This antibody is prepared by Saturated Ammonium Sulfate (SAS) precipitation followed by dialysis against PBS.

**Storage**

Maintain refrigerated at 2-8°C for up to 2 weeks. For long term storage store at -20°C in small aliquots to prevent freeze-thaw cycles.

**Precautions**

KIST (KIS) Antibody (C-term) is for research use only and not for use in diagnostic or therapeutic procedures.

**KIST (KIS) Antibody (C-term) - Protein Information**

**Name** UHMK1

### Synonyms KIS, KIST

**Function** Upon serum stimulation, phosphorylates CDKN1B/p27Kip1, thus controlling CDKN1B subcellular location and cell cycle progression in G1 phase. May be involved in trafficking and/or processing of RNA (By similarity).

### Cellular Location

Nucleus.

### Tissue Location

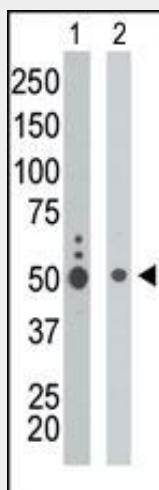
Widely expressed, with highest levels in skeletal muscle, kidney, placenta and peripheral blood leukocytes

### KIST (KIS) Antibody (C-term) - Protocols

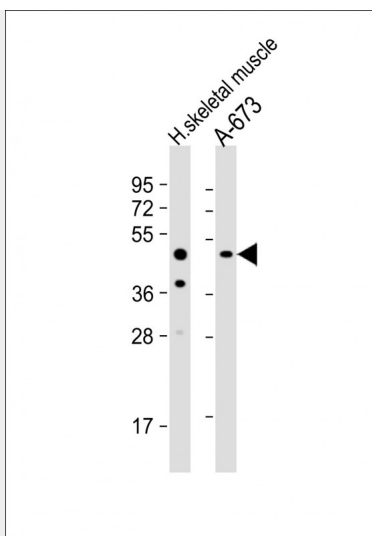
Provided below are standard protocols that you may find useful for product applications.

- [Western Blot](#)
- [Blocking Peptides](#)
- [Dot Blot](#)
- [Immunohistochemistry](#)
- [Immunofluorescence](#)
- [Immunoprecipitation](#)
- [Flow Cytometry](#)
- [Cell Culture](#)

### KIST (KIS) Antibody (C-term) - Images



The anti-KIST Pab (Cat. #AP7063b) is used in Western blot to detect KIST in K562 cell lysate (Lane 1) and mouse liver tissue lysate (Lane 2).



All lanes : Anti-KIST Antibody (L280) at 1:1000 dilution Lane 1: human skeletal muscle lysate Lane 2: A-673 whole cell lysate Lysates/proteins at 20 µg per lane. Secondary Goat Anti-Rabbit IgG, (H+L), Peroxidase conjugated at 1/10000 dilution. Predicted band size : 47 kDa Blocking/Dilution buffer: 5% NFDN/TBST.

#### **KIST (KIS) Antibody (C-term) - Background**

KIST, a member of the Ser/Thr protein kinase family, is a pyruvate kinase that catalyzes formation of phosphoenolpyruvate from pyruvate and ATP. A role for the primarily nuclear KIST protein in mediation of cellular metabolism has been postulated based on the interaction identified with thyroid hormone. KIST is widely expressed, with highest abundance in skeletal muscle, kidney, placenta and peripheral blood leukocytes. Upon serum stimulation, KIST phosphorylates CDKN1B/p27Kip1, thereby regulating the subcellular location of CDKN1B and cell cycle progression in the G1 phase. KIST, which contains one RNA recognition motif domain, has been proposed to participate in trafficking and processing of RNA. KIST binds to Opa protein, a bacterial outer membrane protein involved in gonococcal adherence to and invasion of human cells.

#### **KIST (KIS) Antibody (C-term) - References**

- Bieche, I., et al., Brain Res. Mol. Brain Res. 114(1):55-64 (2003).
- Boehm, M., et al., EMBO J. 21(13):3390-3401 (2002).
- Caldwell, B.D., et al., J. Biol. Chem. 274(49):34646-34656 (1999).