

CHK Antibody (N-term)
Purified Rabbit Polyclonal Antibody (Pab)
Catalog # AP7064a**Specification**

CHK Antibody (N-term) - Product Information

Application	WB,E
Primary Accession	P35790
Reactivity	Human, Mouse
Host	Rabbit
Clonality	Polyclonal
Isotype	Rabbit IgG
Calculated MW	52249
Antigen Region	64-94

CHK Antibody (N-term) - Additional Information**Gene ID** 1119**Other Names**

Choline kinase alpha, CK, CHETK-alpha, Ethanolamine kinase, EK, CHKA, CHK, CKI

Target/Specificity

This CHK antibody is generated from rabbits immunized with a KLH conjugated synthetic peptide between 64-94 amino acids from the N-terminal region of human CHK.

Dilution

WB~~1:1000

E~~Use at an assay dependent concentration.

Format

Purified polyclonal antibody supplied in PBS with 0.09% (W/V) sodium azide. This antibody is prepared by Saturated Ammonium Sulfate (SAS) precipitation followed by dialysis against PBS.

Storage

Maintain refrigerated at 2-8°C for up to 2 weeks. For long term storage store at -20°C in small aliquots to prevent freeze-thaw cycles.

Precautions

CHK Antibody (N-term) is for research use only and not for use in diagnostic or therapeutic procedures.

CHK Antibody (N-term) - Protein Information**Name** CHKA**Synonyms** CHK, CKI {ECO:0000303|PubMed:1618328}

Function Plays a key role in phospholipid biosynthesis by catalyzing the phosphorylation of free choline to phosphocholine, the first step in phosphatidylcholine biosynthesis (PubMed:[17007874](#), PubMed:[19915674](#), PubMed:[23416529](#), PubMed:[34077757](#)). Also phosphorylates ethanolamine, thereby contributing to phosphatidylethanolamine biosynthesis (PubMed:[17007874](#), PubMed:[19915674](#)). Has higher activity with choline (PubMed:[17007874](#), PubMed:[19915674](#)). May contribute to tumor cell growth (PubMed:[19915674](#)).

Cellular Location

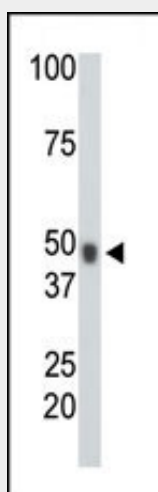
Cytoplasm, cytosol.

CHK Antibody (N-term) - Protocols

Provided below are standard protocols that you may find useful for product applications.

- [Western Blot](#)
- [Blocking Peptides](#)
- [Dot Blot](#)
- [Immunohistochemistry](#)
- [Immunofluorescence](#)
- [Immunoprecipitation](#)
- [Flow Cytometry](#)
- [Cell Culture](#)

CHK Antibody (N-term) - Images



The anti-CHK Pab (Cat. #AP7064a) is used in Western blot to detect CHK in mouse heart tissue lysate.

CHK Antibody (N-term) - Background

The dominant pathway for biosynthesis of phosphatidylcholine occurs through the CDP-choline pathway. Choline kinase alpha (CHK) is the first enzyme in the pathway and may thereby play an upstream regulatory role in lipid transport and metabolism. CHK additionally catalyzes phosphorylation of ethanolamine.