

**KIF20A Polyclonal Antibody**  
**Catalog # AP70653****Specification**

---

**KIF20A Polyclonal Antibody - Product Information**

Application	WB, IHC-P, IF
Primary Accession	<a href="#">O95235</a>
Reactivity	Human
Host	Rabbit
Clonality	Polyclonal

**KIF20A Polyclonal Antibody - Additional Information****Gene ID** 10112**Other Names**

KIF20A; MKLP2; RAB6KIFL; Kinesin-like protein KIF20A; GG10\_2; Mitotic kinesin-like protein 2; MKlp2; Rab6-interacting kinesin-like protein; Rabkinesin-6

**Dilution**WB~~Western Blot: 1/500 - 1/2000. Immunohistochemistry: 1/100 - 1/300. Immunofluorescence: 1/200 - 1/1000. ELISA: 1/20000. Not yet tested in other applications.  
IHC-P~~N/A  
IF~~1:50~200**Format**

Liquid in PBS containing 50% glycerol, 0.5% BSA and 0.09% (W/V) sodium azide.

**Storage Conditions**

-20°C

**KIF20A Polyclonal Antibody - Protein Information****Name** KIF20A**Synonyms** MKLP2, RAB6KIFL**Function**

Mitotic kinesin required for chromosome passenger complex (CPC)-mediated cytokinesis. Following phosphorylation by PLK1, involved in recruitment of PLK1 to the central spindle. Interacts with guanosine triphosphate (GTP)-bound forms of RAB6A and RAB6B. May act as a motor required for the retrograde RAB6 regulated transport of Golgi membranes and associated vesicles along microtubules. Has a microtubule plus end- directed motility.

**Cellular Location**

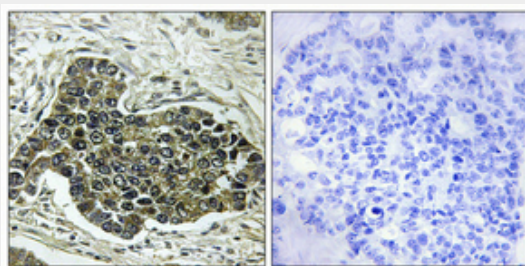
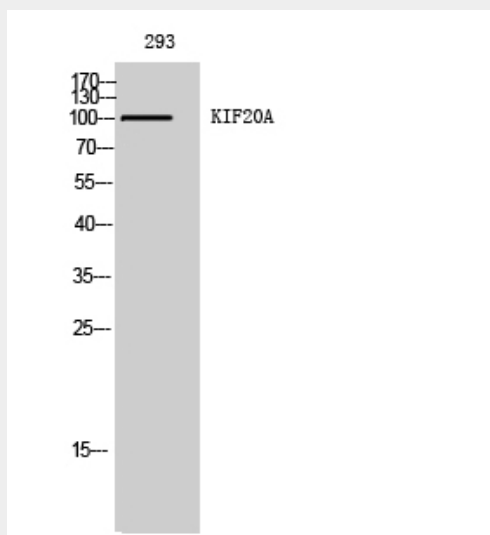
Golgi apparatus. Cytoplasm, cytoskeleton, spindle. Note=Localizes to the spindle midzone during anaphase and telophase.

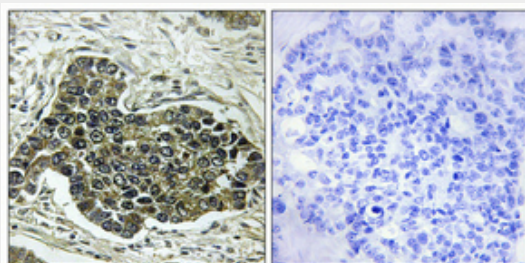
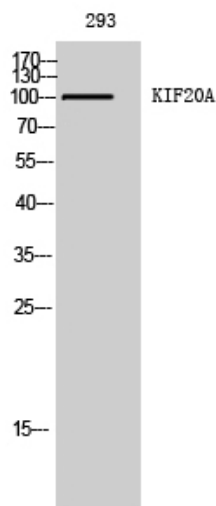
## KIF20A Polyclonal Antibody - Protocols

Provided below are standard protocols that you may find useful for product applications.

- [Western Blot](#)
- [Blocking Peptides](#)
- [Dot Blot](#)
- [Immunohistochemistry](#)
- [Immunofluorescence](#)
- [Immunoprecipitation](#)
- [Flow Cytometry](#)
- [Cell Culture](#)

## KIF20A Polyclonal Antibody - Images





#### KIF20A Polyclonal Antibody - Background

Mitotic kinesin required for chromosome passenger complex (CPC)-mediated cytokinesis. Following phosphorylation by PLK1, involved in recruitment of PLK1 to the central spindle. Interacts with guanosine triphosphate (GTP)-bound forms of RAB6A and RAB6B. May act as a motor required for the retrograde RAB6 regulated transport of Golgi membranes and associated vesicles along microtubules. Has a microtubule plus end-directed motility.