

KIF4A Polyclonal Antibody
Catalog # AP70655**Specification**

KIF4A Polyclonal Antibody - Product Information

Application	WB
Primary Accession	O95239
Reactivity	Human
Host	Rabbit
Clonality	Polyclonal

KIF4A Polyclonal Antibody - Additional Information**Gene ID** 24137**Other Names**

KIF4A; KIF4; Chromosome-associated kinesin KIF4A; Chromokinesin-A

Dilution

WB~~Western Blot: 1/500 - 1/2000. ELISA: 1/40000. Not yet tested in other applications.

Format

Liquid in PBS containing 50% glycerol, 0.5% BSA and 0.09% (W/V) sodium azide.

Storage Conditions

-20°C

KIF4A Polyclonal Antibody - Protein Information**Name** KIF4A**Synonyms** KIF4**Function**

Iron-sulfur (Fe-S) cluster binding motor protein that has a role in chromosome segregation during mitosis (PubMed:<<http://www.uniprot.org/citations/29848660>>29848660). Translocates PRC1 to the plus ends of interdigitating spindle microtubules during the metaphase to anaphase transition, an essential step for the formation of an organized central spindle midzone and midbody and for successful cytokinesis (PubMed:<<http://www.uniprot.org/citations/15297875>>15297875, PubMed:<<http://www.uniprot.org/citations/15625105>>15625105). May play a role in mitotic chromosomal positioning and bipolar spindle stabilization (By similarity).

Cellular Location

Nucleus matrix. Cytoplasm. Cytoplasm, cytoskeleton, spindle Midbody Chromosome.
Note=Associates with chromosomes at all stage of mitosis (PubMed:11736643, PubMed:15297875, PubMed:15625105) Chromatin localization is dependent on iron-sulfur cluster binding (PubMed:29848660). In anaphase, associates with the mitotic spindle midzone

(PubMed:15297875). In telophase and cytokinesis, co-localizes with CIAO2B at the spindle midzone and midbody (PubMed:29848660, PubMed:15297875). Co-localizes with PRC1 in early mitosis and at the spindle midzone from anaphase B to telophase (PubMed:15297875, PubMed:15625105). Does not localize to the nucleolus (PubMed:11736643)

Tissue Location

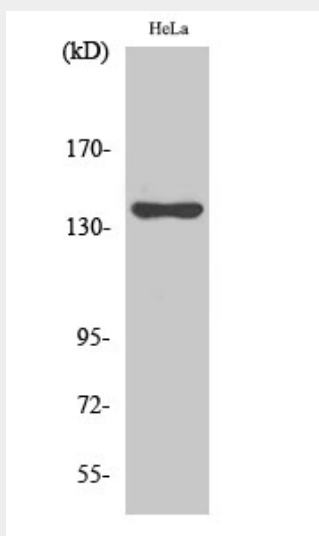
Highly expressed in hematopoietic tissues, fetal liver, spleen, thymus and adult thymus and bone marrow. Lower levels are found in heart, testis, kidney, colon and lung

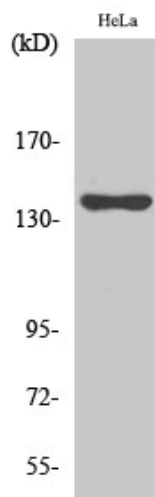
KIF4A Polyclonal Antibody - Protocols

Provided below are standard protocols that you may find useful for product applications.

- [Western Blot](#)
- [Blocking Peptides](#)
- [Dot Blot](#)
- [Immunohistochemistry](#)
- [Immunofluorescence](#)
- [Immunoprecipitation](#)
- [Flow Cytometry](#)
- [Cell Culture](#)

KIF4A Polyclonal Antibody - Images





KIF4A Polyclonal Antibody - Background

Motor protein that translocates PRC1 to the plus ends of interdigitating spindle microtubules during the metaphase to anaphase transition, an essential step for the formation of an organized central spindle midzone and midbody and for successful cytokinesis. May play a role in mitotic chromosomal positioning and bipolar spindle stabilization.