

**KKIALRE Polyclonal Antibody**  
**Catalog # AP70664****Specification**

---

**KKIALRE Polyclonal Antibody - Product Information**

Application	WB, IHC-P
Primary Accession	<a href="#">Q00532</a>
Reactivity	Human, Rat
Host	Rabbit
Clonality	Polyclonal

**KKIALRE Polyclonal Antibody - Additional Information****Gene ID** 8814**Other Names**

CDKL1; Cyclin-dependent kinase-like 1; Protein kinase p42 KKIALRE; Serine/threonine-protein kinase KKIALRE

**Dilution**

WB~~Western Blot: 1/500 - 1/2000. Immunohistochemistry: 1/100 - 1/300. ELISA: 1/10000. Not yet tested in other applications.

IHC-P~~N/A

**Format**

Liquid in PBS containing 50% glycerol, 0.5% BSA and 0.09% (W/V) sodium azide.

**Storage Conditions**

-20°C

**KKIALRE Polyclonal Antibody - Protein Information****Name** CDKL1 ([HGNC:1781](#))**Cellular Location**

Cytoplasm. Nucleus

**Tissue Location**

Highly expressed in kidney, and to a lower extent in ovary.

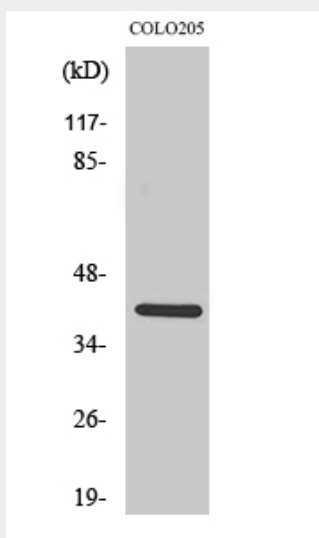
**KKIALRE Polyclonal Antibody - Protocols**

Provided below are standard protocols that you may find useful for product applications.

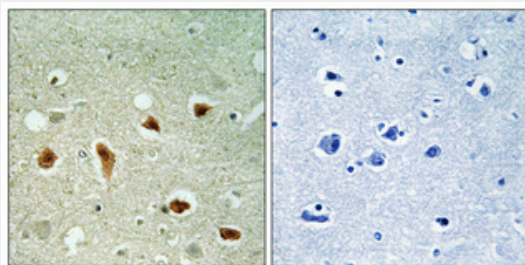
- [Western Blot](#)
- [Blocking Peptides](#)

- [Dot Blot](#)
- [Immunohistochemistry](#)
- [Immunofluorescence](#)
- [Immunoprecipitation](#)
- [Flow Cytometry](#)
- [Cell Culture](#)

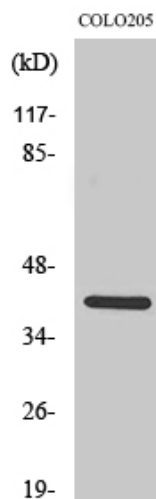
#### KKIALRE Polyclonal Antibody - Images



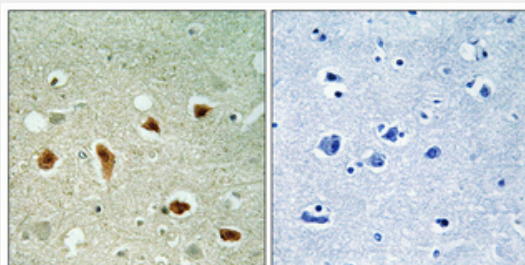
Western Blot analysis of various cells using KKIALRE Polyclonal Antibody diluted at 1:500



Immunohistochemical analysis of paraffin-embedded Human brain. Antibody was diluted at 1:100 (4°, overnight). High-pressure and temperature Tris-EDTA, pH 8.0 was used for antigen retrieval. Negative control (right) obtained from antibody was pre-absorbed by immunogen peptide.



Western Blot analysis of various cells using KKIALRE Polyclonal Antibody diluted at 1:500



Immunohistochemical analysis of paraffin-embedded Human brain. Antibody was diluted at 1:100(4°,overnight). High-pressure and temperature Tris-EDTA,pH8.0 was used for antigen retrieval. Negative contrl (right) obtaned from antibody was pre-absorbed by immunogen peptide.