

Lad Polyclonal Antibody
Catalog # AP70701**Specification**

Lad Polyclonal Antibody - Product Information

Application	WB, IHC-P
Primary Accession	Q9NP31
Reactivity	Human
Host	Rabbit
Clonality	Polyclonal

Lad Polyclonal Antibody - Additional Information**Gene ID** 9047**Other Names**

SH2D2A; SCAP; TSAD; VRAP; SH2 domain-containing protein 2A; SH2 domain-containing adapter protein; T cell-specific adapter protein; TSAd; VEGF receptor-associated protein

Dilution

WB~~Western Blot: 1/500 - 1/2000. Immunohistochemistry: 1/100 - 1/300. ELISA: 1/10000. Not yet tested in other applications.

IHC-P~~N/A

Format

Liquid in PBS containing 50% glycerol, 0.5% BSA and 0.09% (W/V) sodium azide.

Storage Conditions

-20°C

Lad Polyclonal Antibody - Protein Information**Name** SH2D2A**Synonyms** SCAP, TSAD, VRAP**Function**

Could be a T-cell-specific adapter protein involved in the control of T-cell activation. May play a role in the CD4-p56-LCK- dependent signal transduction pathway. Could also play an important role in normal and pathological angiogenesis. Could be an adapter protein that facilitates and regulates interaction of KDR with effector proteins important to endothelial cell survival and proliferation.

Cellular Location

Cytoplasm.

Tissue Location

Expression limited to tissues of the immune system and, in particular, activated T-cells. Expressed

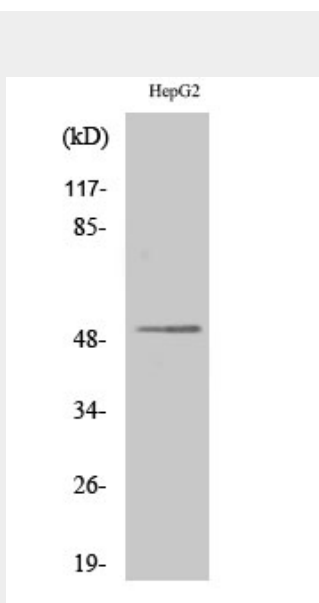
in peripheral blood leukocytes, thymus and spleen. Much lower expression or undetectable, in brain, placenta, skeletal muscle, prostate, testis, ovary, small intestine, and colon. Expressed at low levels in unstimulated T-cells, but not expressed in normal resting or activated B-cells. According to PubMed:10692392, expression is not restricted to activated T-cells, but strongly expressed in blood cell lineages, the endothelium and other cell and tissue types, such as heart, lung, and liver

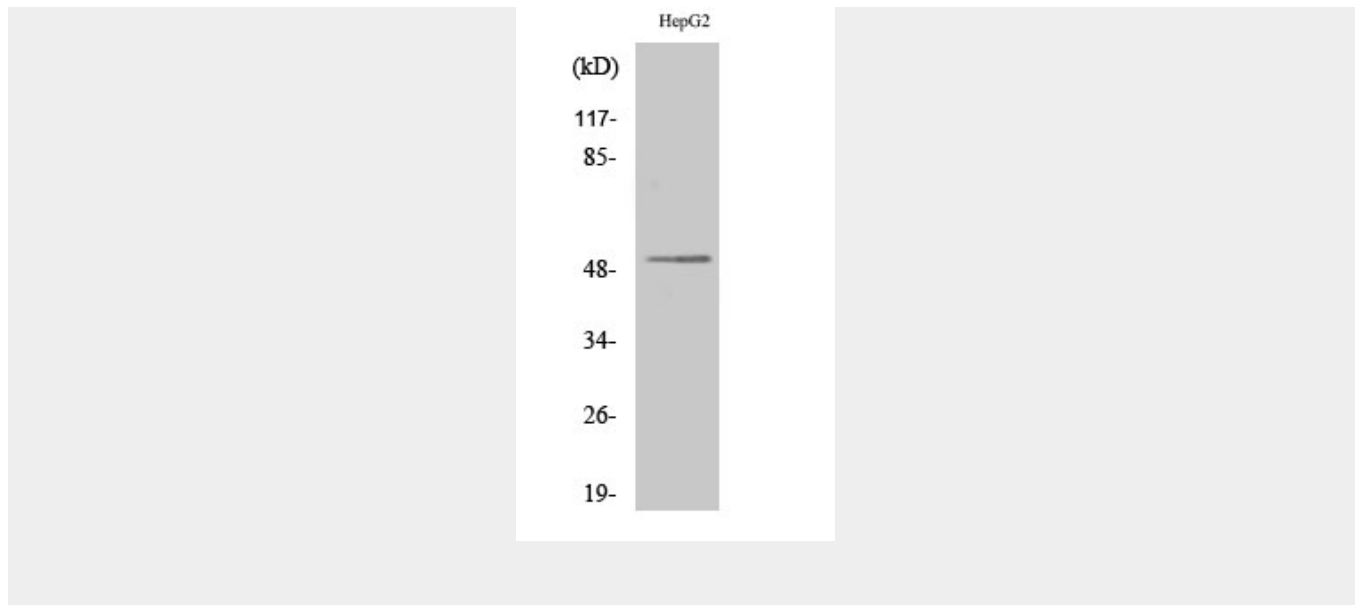
Lad Polyclonal Antibody - Protocols

Provided below are standard protocols that you may find useful for product applications.

- [Western Blot](#)
- [Blocking Peptides](#)
- [Dot Blot](#)
- [Immunohistochemistry](#)
- [Immunofluorescence](#)
- [Immunoprecipitation](#)
- [Flow Cytometry](#)
- [Cell Culture](#)

Lad Polyclonal Antibody - Images





Lad Polyclonal Antibody - Background

Could be a T-cell-specific adapter protein involved in the control of T-cell activation. May play a role in the CD4-p56- LCK-dependent signal transduction pathway. Could also play an important role in normal and pathological angiogenesis. Could be an adapter protein that facilitates and regulates interaction of KDR with effector proteins important to endothelial cell survival and proliferation.