

Laminin α -4 Polyclonal Antibody
Catalog # AP70709**Specification**

Laminin α -4 Polyclonal Antibody - Product Information

Application	WB, IHC-P, IF
Primary Accession	Q16363
Reactivity	Human, Mouse
Host	Rabbit
Clonality	Polyclonal

Laminin α -4 Polyclonal Antibody - Additional Information**Gene ID** 3910**Other Names**

LAMA4; Laminin subunit alpha-4; Laminin-14 subunit alpha; Laminin-8 subunit alpha; Laminin-9 subunit alpha

Dilution

WB~~Western Blot: 1/500 - 1/2000. Immunohistochemistry: 1/100 - 1/300. Immunofluorescence: 1/200 - 1/1000. ELISA: 1/40000. Not yet tested in other applications.

IHC-P~~N/A

IF~~1:50~200

Format

Liquid in PBS containing 50% glycerol, 0.5% BSA and 0.09% (W/V) sodium azide.

Storage Conditions

-20°C

Laminin α -4 Polyclonal Antibody - Protein Information**Name** LAMA4**Function**

Binding to cells via a high affinity receptor, laminin is thought to mediate the attachment, migration and organization of cells into tissues during embryonic development by interacting with other extracellular matrix components.

Cellular Location

Secreted, extracellular space, extracellular matrix, basement membrane. Secreted. Note=Major basement membrane component

Tissue Location

Detected in placenta (at protein level) (PubMed:32337544). Detected in fibroblasts and urine (at protein level) (PubMed:25326458, PubMed:36213313, PubMed:37453717). In adult, strong expression in heart, lung, ovary small and large intestines, placenta, liver; weak or no expression

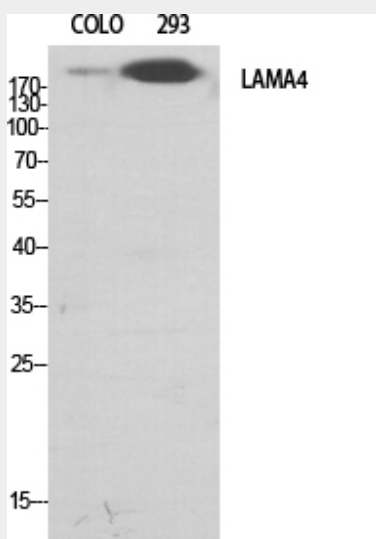
in skeletal muscle, kidney, pancreas, testis, prostate, brain. High expression in fetal lung and kidney Expression in fetal and newborn tissues is observed in certain mesenchymal cells in tissues such as smooth muscle and dermis

Laminin α -4 Polyclonal Antibody - Protocols

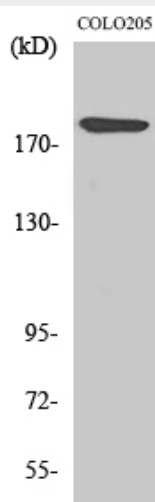
Provided below are standard protocols that you may find useful for product applications.

- [Western Blot](#)
- [Blocking Peptides](#)
- [Dot Blot](#)
- [Immunohistochemistry](#)
- [Immunofluorescence](#)
- [Immunoprecipitation](#)
- [Flow Cytometry](#)
- [Cell Culture](#)

Laminin α -4 Polyclonal Antibody - Images



Western Blot analysis of various cells using Laminin α -4 Polyclonal Antibody diluted at 1:500



Western Blot analysis of 293 cells using Laminin α -4 Polyclonal Antibody diluted at 1:500

Laminin α -4 Polyclonal Antibody - Background

Binding to cells via a high affinity receptor, laminin is thought to mediate the attachment, migration and organization of cells into tissues during embryonic development by interacting with other extracellular matrix components.