

LAT Polyclonal Antibody
Catalog # AP70722**Specification**

LAT Polyclonal Antibody - Product Information

Application	WB
Primary Accession	O43561
Reactivity	Human, Mouse, Rat
Host	Rabbit
Clonality	Polyclonal

LAT Polyclonal Antibody - Additional Information**Gene ID** 27040**Other Names**

LAT; Linker for activation of T-cells family member 1; 36 kDa phospho-tyrosine adapter protein; pp36; p36-38

Dilution

WB~~Western Blot: 1/500 - 1/2000. ELISA: 1/5000. Not yet tested in other applications.

Format

Liquid in PBS containing 50% glycerol, 0.5% BSA and 0.09% (W/V) sodium azide.

Storage Conditions

-20°C

LAT Polyclonal Antibody - Protein Information**Name** LAT**Function**

Required for TCR (T-cell antigen receptor)- and pre-TCR- mediated signaling, both in mature T-cells and during their development (PubMed:<[a href="http://www.uniprot.org/citations/23514740"](http://www.uniprot.org/citations/23514740)target="_blank">23514740, PubMed:<[a href="http://www.uniprot.org/citations/25907557"](http://www.uniprot.org/citations/25907557)target="_blank">25907557). Involved in FCGR3 (low affinity immunoglobulin gamma Fc region receptor III)-mediated signaling in natural killer cells and FCER1 (high affinity immunoglobulin epsilon receptor)-mediated signaling in mast cells. Couples activation of these receptors and their associated kinases with distal intracellular events such as mobilization of intracellular calcium stores, PKC activation, MAPK activation or cytoskeletal reorganization through the recruitment of PLCG1, GRB2, GRAP2, and other signaling molecules.

Cellular Location

Cell membrane; Single-pass type III membrane protein. Note=Present in lipid rafts

Tissue Location

Expressed in thymus, T-cells, NK cells, mast cells and, at lower levels, in spleen. Present in T-cells

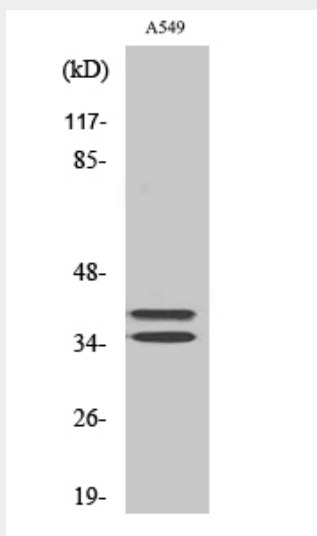
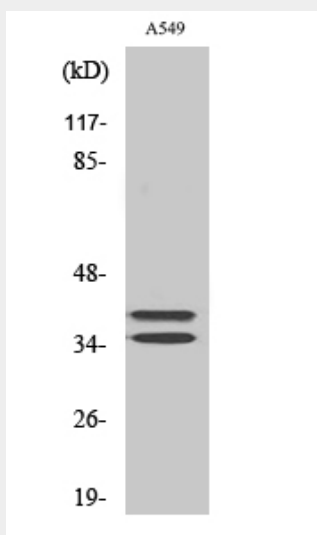
but not B-cells (at protein level).

LAT Polyclonal Antibody - Protocols

Provided below are standard protocols that you may find useful for product applications.

- [Western Blot](#)
- [Blocking Peptides](#)
- [Dot Blot](#)
- [Immunohistochemistry](#)
- [Immunofluorescence](#)
- [Immunoprecipitation](#)
- [Flow Cytometry](#)
- [Cell Culture](#)

LAT Polyclonal Antibody - Images



LAT Polyclonal Antibody - Background

Required for TCR (T-cell antigen receptor)- and pre-TCR- mediated signaling, both in mature T-cells and during their development. Involved in FCGR3 (low affinity immunoglobulin gamma Fc region receptor III)-mediated signaling in natural killer cells and FCER1 (high affinity immunoglobulin epsilon receptor)-mediated signaling in mast cells. Couples activation of these receptors and their associated kinases with distal intracellular events such as mobilization of intracellular calcium stores, PKC activation, MAPK activation or cytoskeletal reorganization through the recruitment of PLCG1, GRB2, GRAP2, and other signaling molecules.