

LBP Polyclonal Antibody
Catalog # AP70727**Specification**

LBP Polyclonal Antibody - Product Information

Application	WB
Primary Accession	P18428
Reactivity	Human, Mouse, Rat
Host	Rabbit
Clonality	Polyclonal

LBP Polyclonal Antibody - Additional Information**Gene ID** 3929**Other Names**

LBP; Lipopolysaccharide-binding protein; LBP

Dilution

WB~~Western Blot: 1/500 - 1/2000. ELISA: 1/40000. Not yet tested in other applications.

Format

Liquid in PBS containing 50% glycerol, 0.5% BSA and 0.09% (W/V) sodium azide.

Storage Conditions

-20°C

LBP Polyclonal Antibody - Protein Information**Name** LBP**Function**

Plays a role in the innate immune response. Binds to the lipid A moiety of bacterial lipopolysaccharides (LPS), a glycolipid present in the outer membrane of all Gram-negative bacteria (PubMed:<[a href="http://www.uniprot.org/citations/24120359" target="_blank">24120359](http://www.uniprot.org/citations/24120359)>, PubMed:<[a href="http://www.uniprot.org/citations/7517398" target="_blank">7517398](http://www.uniprot.org/citations/7517398)>). Acts as an affinity enhancer for CD14, facilitating its association with LPS. Promotes the release of cytokines in response to bacterial lipopolysaccharide (PubMed:<[a href="http://www.uniprot.org/citations/24120359" target="_blank">24120359](http://www.uniprot.org/citations/24120359)>, PubMed:<[a href="http://www.uniprot.org/citations/7517398" target="_blank">7517398](http://www.uniprot.org/citations/7517398)>).

Cellular Location

Secreted. Cytoplasmic granule membrane {ECO:0000250|UniProtKB:P17213}. Note=Membrane-associated in polymorphonuclear Leukocytes (PMN) granules {ECO:0000250|UniProtKB:P17213}

Tissue Location

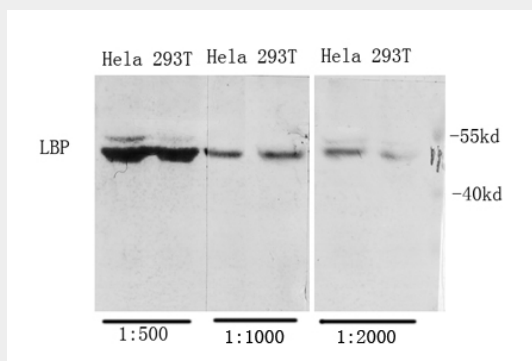
Detected in blood serum (at protein level).

LBP Polyclonal Antibody - Protocols

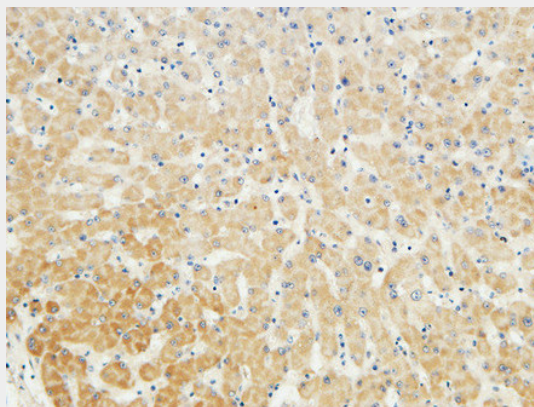
Provided below are standard protocols that you may find useful for product applications.

- [Western Blot](#)
- [Blocking Peptides](#)
- [Dot Blot](#)
- [Immunohistochemistry](#)
- [Immunofluorescence](#)
- [Immunoprecipitation](#)
- [Flow Cytometry](#)
- [Cell Culture](#)

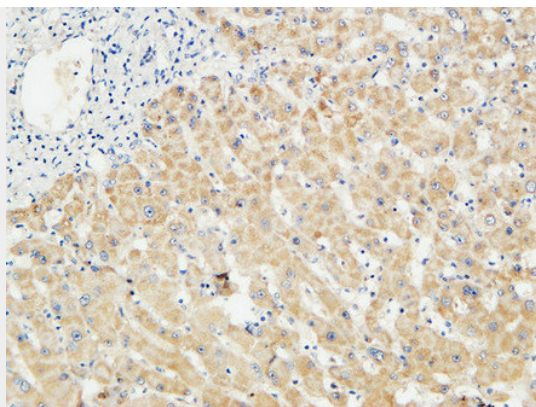
LBP Polyclonal Antibody - Images



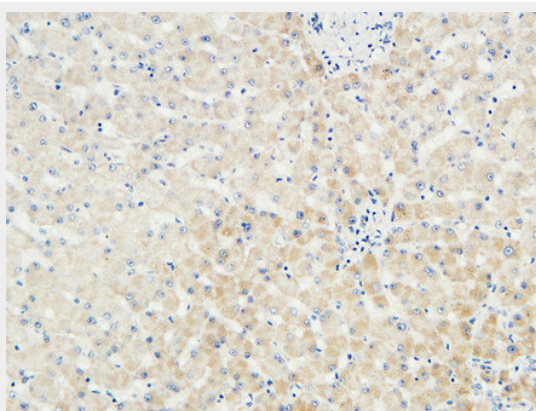
Western Blot analysis of various cells using Antibody diluted at 1:1000. Secondary antibody was diluted at 1:20000 cells nucleus extracted by Minute TM Cytoplasmic and Nuclear Fractionation kit (SC-003, Invent biotech, MN, USA).



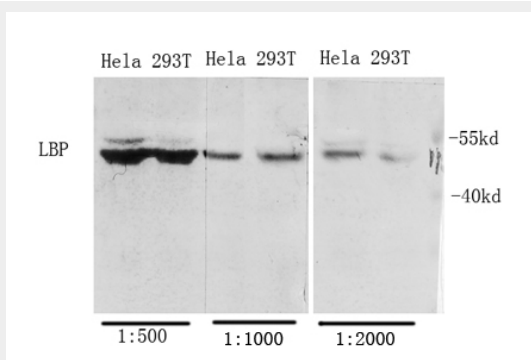
Immunohistochemical analysis of paraffin-embedded Human liver. 1, Antibody was diluted at 1:100(4°, overnight). 2, High-pressure and temperature EDTA, pH8.0 was used for antigen retrieval. 3, Secondary antibody was diluted at 1:200(room temperature, 30min).



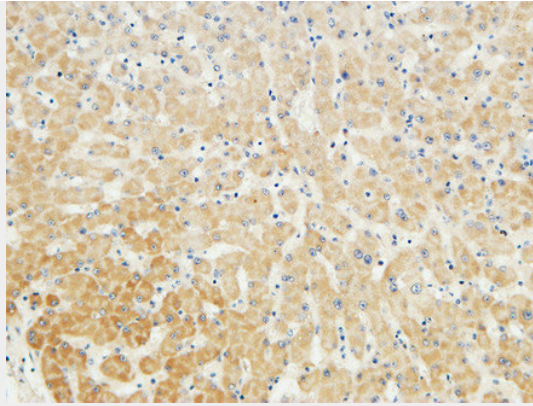
Immunohistochemical analysis of paraffin-embedded Human liver. 1, Antibody was diluted at 1:100(4°,overnight). 2, High-pressure and temperature EDTA, pH8.0 was used for antigen retrieval. 3,Secondary antibody was diluted at 1:200(room temperature, 30min).



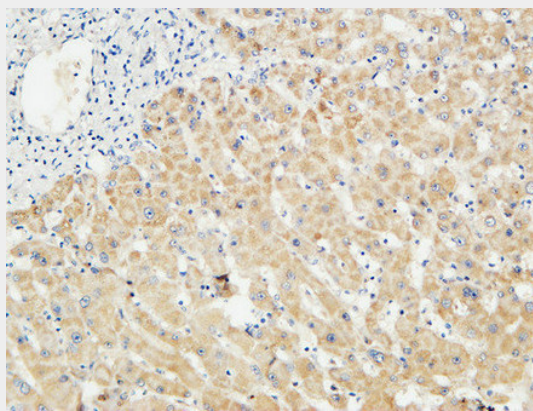
Immunohistochemical analysis of paraffin-embedded Human liver. 1, Antibody was diluted at 1:100(4°,overnight). 2, High-pressure and temperature EDTA, pH8.0 was used for antigen retrieval. 3,Secondary antibody was diluted at 1:200(room temperature, 30min).



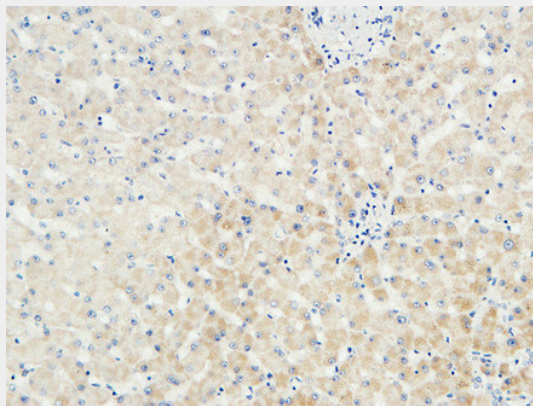
Western Blot analysis of various cells using Antibody diluted at 1:1000. Secondary antibody was diluted at 1:20000 cells nucleus extracted by Minute TM Cytoplasmic and Nuclear Fractionation kit (SC-003, Inventbiotech, MN, USA).



Immunohistochemical analysis of paraffin-embedded Human liver. 1, Antibody was diluted at 1:100(4°,overnight). 2, High-pressure and temperature EDTA, pH8.0 was used for antigen retrieval. 3,Secondary antibody was diluted at 1:200(room temperature, 30min).



Immunohistochemical analysis of paraffin-embedded Human liver. 1, Antibody was diluted at 1:100(4°,overnight). 2, High-pressure and temperature EDTA, pH8.0 was used for antigen retrieval. 3,Secondary antibody was diluted at 1:200(room temperature, 30min).



Immunohistochemical analysis of paraffin-embedded Human liver. 1, Antibody was diluted at 1:100(4°,overnight). 2, High-pressure and temperature EDTA, pH8.0 was used for antigen retrieval. 3,Secondary antibody was diluted at 1:200(room temperature, 30min).

LBP Polyclonal Antibody - Background

Plays a role in the innate immune response. Binds to the lipid A moiety of bacterial lipopolysaccharides (LPS), a glycolipid present in the outer membrane of all Gram-negative bacteria (PubMed:7517398, PubMed:24120359). Acts as an affinity enhancer for CD14, facilitating its association with LPS. Promotes the release of cytokines in response to bacterial lipopolysaccharide

(PubMed:7517398, PubMed:24120359).