

GALK1 Antibody (C-term)
Purified Rabbit Polyclonal Antibody (Pab)
Catalog # AP7081b**Specification**

GALK1 Antibody (C-term) - Product Information

Application	WB,E
Primary Accession	P51570
Reactivity	Human, Mouse
Host	Rabbit
Clonality	Polyclonal
Isotype	Rabbit IgG
Calculated MW	42272
Antigen Region	345-375

GALK1 Antibody (C-term) - Additional Information**Gene ID** 2584**Other Names**

Galactokinase, Galactose kinase, GALK1, GALK

Target/Specificity

This GALK1 antibody is generated from rabbits immunized with a KLH conjugated synthetic peptide between 345-375 amino acids from the C-terminal region of human GALK1.

Dilution

WB~~1:1000

E~~Use at an assay dependent concentration.

Format

Purified polyclonal antibody supplied in PBS with 0.09% (W/V) sodium azide. This antibody is prepared by Saturated Ammonium Sulfate (SAS) precipitation followed by dialysis against PBS.

Storage

Maintain refrigerated at 2-8°C for up to 2 weeks. For long term storage store at -20°C in small aliquots to prevent freeze-thaw cycles.

Precautions

GALK1 Antibody (C-term) is for research use only and not for use in diagnostic or therapeutic procedures.

GALK1 Antibody (C-term) - Protein Information**Name** GALK1 ([HGNC:4118](#))**Synonyms** GALK

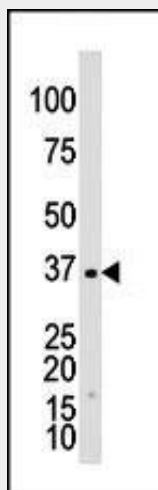
Function Catalyzes the transfer of a phosphate from ATP to alpha-D- galactose and participates in the first committed step in the catabolism of galactose.

GALK1 Antibody (C-term) - Protocols

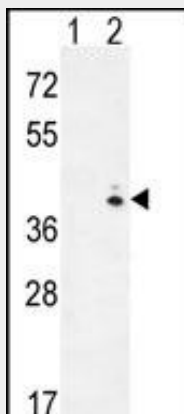
Provided below are standard protocols that you may find useful for product applications.

- [Western Blot](#)
- [Blocking Peptides](#)
- [Dot Blot](#)
- [Immunohistochemistry](#)
- [Immunofluorescence](#)
- [Immunoprecipitation](#)
- [Flow Cytometry](#)
- [Cell Culture](#)

GALK1 Antibody (C-term) - Images



The anti-GALK1 Pab (Cat. #AP7081b) is used in Western blot to detect GALK1 in Y79 cell lysate.



Western blot analysis of GALK1 (arrow) using rabbit polyclonal hGALK1-A360 (Cat. #AP7081b). 293 cell lysates (2 ug/lane) either nontransfected (Lane 1) or transiently transfected (Lane 2) with the GALK1 gene.

GALK1 Antibody (C-term) - Background

Galactokinase is a major enzyme for the metabolism of galactose and its deficiency causes congenital cataracts in the adult population. GALK1 sequence shares the greatest level of conservation, 44.5% identity with that from E. coli and 34.6% amino acid identity with the product of the human GALK2 gene.