

GALK2 Antibody (N-term)
Purified Rabbit Polyclonal Antibody (Pab)
Catalog # AP7082a**Specification**

GALK2 Antibody (N-term) - Product Information

Application	WB,E
Primary Accession	Q01415
Reactivity	Human
Host	Rabbit
Clonality	Polyclonal
Isotype	Rabbit IgG
Calculated MW	50378
Antigen Region	1-30

GALK2 Antibody (N-term) - Additional Information**Gene ID** 2585**Other Names**

N-acetylgalactosamine kinase, GalNAc kinase, Galactokinase 2, GALK2, GK2

Target/Specificity

This GALK2 antibody is generated from rabbits immunized with a KLH conjugated synthetic peptide between 1-30 amino acids from the N-terminal region of human GALK2.

Dilution

WB~~1:1000

Format

Purified polyclonal antibody supplied in PBS with 0.09% (W/V) sodium azide. This antibody is prepared by Saturated Ammonium Sulfate (SAS) precipitation followed by dialysis against PBS.

Storage

Maintain refrigerated at 2-8°C for up to 2 weeks. For long term storage store at -20°C in small aliquots to prevent freeze-thaw cycles.

Precautions

GALK2 Antibody (N-term) is for research use only and not for use in diagnostic or therapeutic procedures.

GALK2 Antibody (N-term) - Protein Information**Name** GALK2**Synonyms** GK2**Function** Acts on GalNAc. Also acts as a galactokinase when galactose is present at high

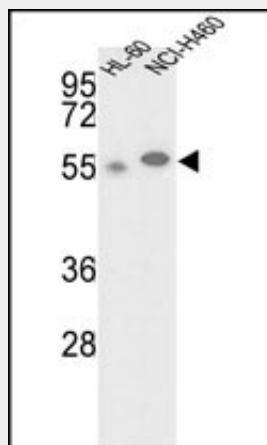
concentrations. May be involved in a salvage pathway for the reutilization of free GalNAc derived from the degradation of complex carbohydrates.

GALK2 Antibody (N-term) - Protocols

Provided below are standard protocols that you may find useful for product applications.

- [Western Blot](#)
- [Blocking Peptides](#)
- [Dot Blot](#)
- [Immunohistochemistry](#)
- [Immunofluorescence](#)
- [Immunoprecipitation](#)
- [Flow Cytometry](#)
- [Cell Culture](#)

GALK2 Antibody (N-term) - Images



Western blot analysis of hGALK2-M1 (Cat.#AP7082a) in HL-60, NCI-H460 cell line lysates (35ug/lane). GALK2 (arrow) was detected using the purified Pab.

GALK2 Antibody (N-term) - Background

GALK2 is a highly efficient N-acetylgalactosamine (GalNAc) kinase, which has galactokinase activity when galactose is present at high concentrations.