

M-cadherin Polyclonal Antibody
Catalog # AP70860**Specification**

M-cadherin Polyclonal Antibody - Product Information

Application	WB
Primary Accession	P55291
Reactivity	Human, Mouse, Rat
Host	Rabbit
Clonality	Polyclonal

M-cadherin Polyclonal Antibody - Additional Information**Gene ID** 1013**Other Names**

CDH15; CDH14; CDH3; Cadherin-15; Cadherin-14; Muscle cadherin; M-cadherin

Dilution

WB~~Western Blot: 1/500 - 1/2000. Immunohistochemistry: 1/100 - 1/300. ELISA: 1/10000. Not yet tested in other applications.

Format

Liquid in PBS containing 50% glycerol, 0.5% BSA and 0.09% (W/V) sodium azide.

Storage Conditions

-20°C

M-cadherin Polyclonal Antibody - Protein Information**Name** CDH15**Synonyms** CDH14, CDH3**Function**

Cadherins are calcium-dependent cell adhesion proteins. They preferentially interact with themselves in a homophilic manner in connecting cells; cadherins may thus contribute to the sorting of heterogeneous cell types. M-cadherin is part of the myogenic program and may provide a trigger for terminal muscle differentiation.

Cellular Location

Cell membrane; Single-pass type I membrane protein

Tissue Location

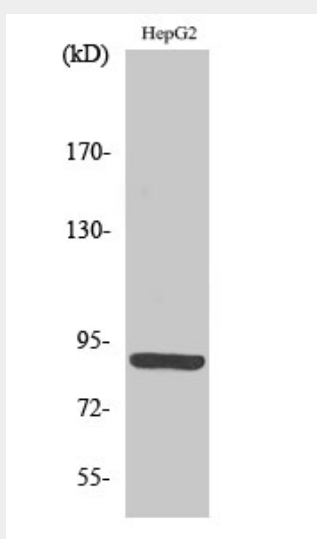
Expressed in the brain and cerebellum.

M-cadherin Polyclonal Antibody - Protocols

Provided below are standard protocols that you may find useful for product applications.

- [Western Blot](#)
- [Blocking Peptides](#)
- [Dot Blot](#)
- [Immunohistochemistry](#)
- [Immunofluorescence](#)
- [Immunoprecipitation](#)
- [Flow Cytometry](#)
- [Cell Culture](#)

M-cadherin Polyclonal Antibody - Images



M-cadherin Polyclonal Antibody - Background

Cadherins are calcium-dependent cell adhesion proteins. They preferentially interact with themselves in a homophilic manner in connecting cells; cadherins may thus contribute to the sorting of heterogeneous cell types. M-cadherin is part of the myogenic program and may provide a trigger for terminal muscle differentiation.