

Mena Polyclonal Antibody
Catalog # AP70914**Specification**

Mena Polyclonal Antibody - Product Information

Application	WB
Primary Accession	Q8N8S7
Reactivity	Human, Mouse, Rat
Host	Rabbit
Clonality	Polyclonal

Mena Polyclonal Antibody - Additional Information**Gene ID** 55740**Other Names**

ENAH; MENA; Protein enabled homolog

Dilution

WB~~Western Blot: 1/500 - 1/2000. Immunohistochemistry: 1/100 - 1/300. ELISA: 1/10000. Not yet tested in other applications.

Format

Liquid in PBS containing 50% glycerol, 0.5% BSA and 0.09% (W/V) sodium azide.

Storage Conditions

-20°C

Mena Polyclonal Antibody - Protein Information**Name** ENAH**Synonyms** MENA**Function**

Ena/VASP proteins are actin-associated proteins involved in a range of processes dependent on cytoskeleton remodeling and cell polarity such as axon guidance and lamellipodial and filopodial dynamics in migrating cells. ENAH induces the formation of F-actin rich outgrowths in fibroblasts. Acts synergistically with BAIAP2-alpha and downstream of NTN1 to promote filipodia formation (By similarity).

Cellular Location

Cytoplasm. Cytoplasm, cytoskeleton. Cell projection, lamellipodium. Cell projection, filopodium. Synapse. Cell junction, focal adhesion. Note=Targeted to the leading edge of lamellipodia and filopodia by MRL family members. Colocalizes at filopodial tips with a number of other proteins including vinculin and zyxlin. Colocalizes with N-WASP at the leading edge. Colocalizes with GPHN and PFN at synapses (By similarity).

Tissue Location

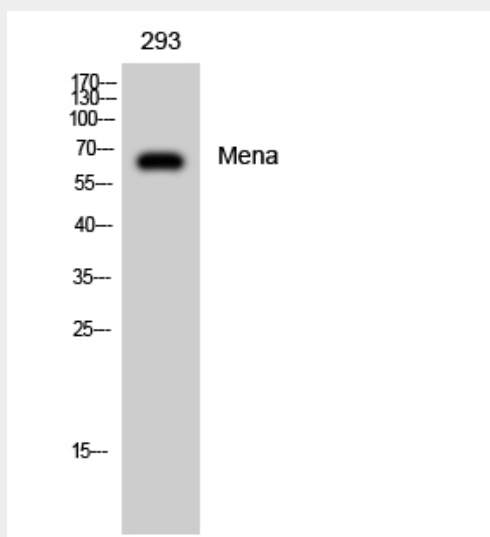
Expressed in myoepithelia of parotid, breast, bronchial glands and sweat glands. Expressed in colon-rectum muscularis mucosae epithelium, pancreas acinar ductal epithelium, endometrium epithelium, prostate fibromuscular stroma and placenta vascular media Overexpressed in a majority of breast cancer cell lines and primary breast tumor lesions.

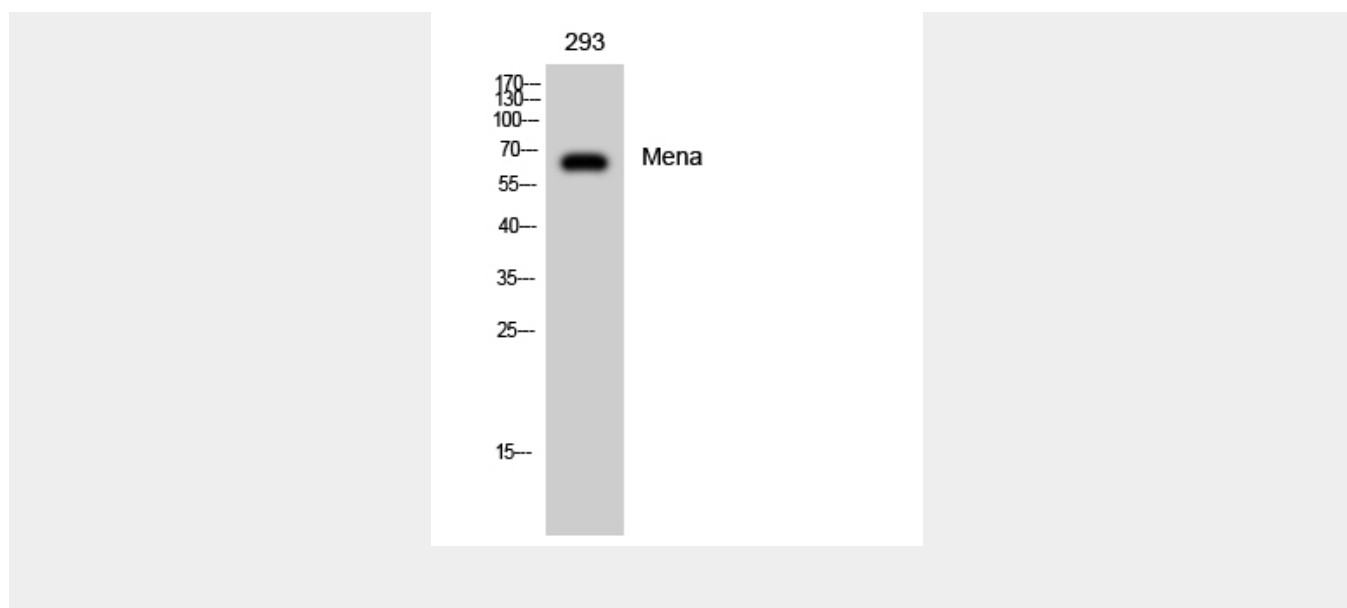
Mena Polyclonal Antibody - Protocols

Provided below are standard protocols that you may find useful for product applications.

- [Western Blot](#)
- [Blocking Peptides](#)
- [Dot Blot](#)
- [Immunohistochemistry](#)
- [Immunofluorescence](#)
- [Immunoprecipitation](#)
- [Flow Cytometry](#)
- [Cell Culture](#)

Mena Polyclonal Antibody - Images





Mena Polyclonal Antibody - Background

Ena/VASP proteins are actin-associated proteins involved in a range of processes dependent on cytoskeleton remodeling and cell polarity such as axon guidance and lamellipodial and filopodial dynamics in migrating cells. ENAH induces the formation of F-actin rich outgrowths in fibroblasts. Acts synergistically with BAIAP2-alpha and downstream of NTN1 to promote filipodia formation (By similarity).