

Mindin Polyclonal Antibody
Catalog # AP70946**Specification**

Mindin Polyclonal Antibody - Product Information

Application	WB
Primary Accession	Q9BUD6
Reactivity	Human, Mouse, Rat, Monkey
Host	Rabbit
Clonality	Polyclonal

Mindin Polyclonal Antibody - Additional Information**Gene ID** 10417**Other Names**

SPON2; DIL1; Spondin-2; Differentially expressed in cancerous and non-cancerous lung cells 1; DIL-1; Mindin

Dilution

WB~~Western Blot: 1/500 - 1/2000. ELISA: 1/40000. Not yet tested in other applications.

Format

Liquid in PBS containing 50% glycerol, 0.5% BSA and 0.09% (W/V) sodium azide.

Storage Conditions

-20°C

Mindin Polyclonal Antibody - Protein Information**Name** SPON2**Synonyms** DIL1**Function**

Cell adhesion protein that promotes adhesion and outgrowth of hippocampal embryonic neurons. Binds directly to bacteria and their components and functions as an opsonin for macrophage phagocytosis of bacteria. Essential in the initiation of the innate immune response and represents a unique pattern-recognition molecule in the ECM for microbial pathogens (By similarity). Binds bacterial lipopolysaccharide (LPS).

Cellular Location

Secreted, extracellular space, extracellular matrix

Tissue Location

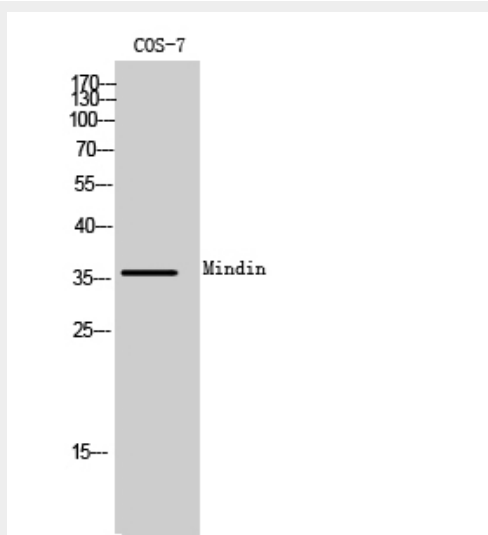
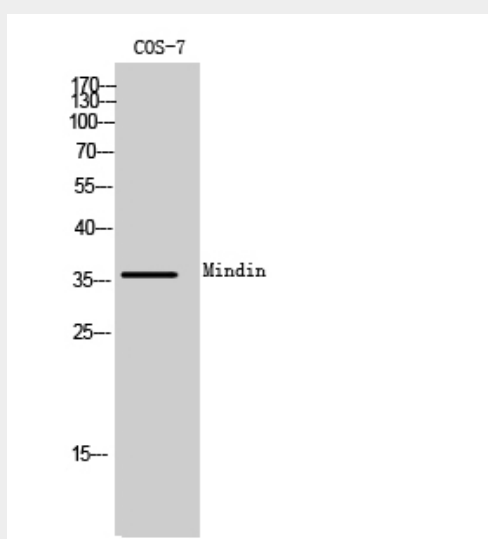
Expressed in normal lung tissue but not in lung carcinoma cell lines.

Mindin Polyclonal Antibody - Protocols

Provided below are standard protocols that you may find useful for product applications.

- [Western Blot](#)
- [Blocking Peptides](#)
- [Dot Blot](#)
- [Immunohistochemistry](#)
- [Immunofluorescence](#)
- [Immunoprecipitation](#)
- [Flow Cytometry](#)
- [Cell Culture](#)

Mindin Polyclonal Antibody - Images



Mindin Polyclonal Antibody - Background

Cell adhesion protein that promotes adhesion and outgrowth of hippocampal embryonic neurons.

Binds directly to bacteria and their components and functions as an opsonin for macrophage phagocytosis of bacteria. Essential in the initiation of the innate immune response and represents a unique pattern- recognition molecule in the ECM for microbial pathogens (By similarity). Binds bacterial lipopolysaccharide (LPS).