

NEK8 Antibody (N-term)
Purified Rabbit Polyclonal Antibody (Pab)
Catalog # AP7095A**Specification**

NEK8 Antibody (N-term) - Product Information

| | |
|-------------------|---|
| Application | WB,E |
| Primary Accession | Q86SG6 |
| Other Accession | D3ZGQ5 , Q91ZR4 |
| Reactivity | Human |
| Predicted | Mouse, Rat |
| Host | Rabbit |
| Clonality | Polyclonal |
| Isotype | Rabbit IgG |
| Calculated MW | 74806 |
| Antigen Region | 65-95 |

NEK8 Antibody (N-term) - Additional Information**Gene ID** 284086**Other Names**

Serine/threonine-protein kinase Nek8, Never in mitosis A-related kinase 8, NimA-related protein kinase 8, Nima-related protein kinase 12a, NEK8, JCK, NEK12A

Target/Specificity

This NEK8 antibody is generated from rabbits immunized with a KLH conjugated synthetic peptide between 65-95 amino acids from the N-terminal region of human NEK8.

Dilution

WB~~1:1000

E~~Use at an assay dependent concentration.

Format

Purified polyclonal antibody supplied in PBS with 0.09% (W/V) sodium azide. This antibody is prepared by Saturated Ammonium Sulfate (SAS) precipitation followed by dialysis against PBS.

Storage

Maintain refrigerated at 2-8°C for up to 2 weeks. For long term storage store at -20°C in small aliquots to prevent freeze-thaw cycles.

Precautions

NEK8 Antibody (N-term) is for research use only and not for use in diagnostic or therapeutic procedures.

NEK8 Antibody (N-term) - Protein Information**Name** NEK8

Synonyms JCK, NEK12A

Function Required for renal tubular integrity. May regulate local cytoskeletal structure in kidney tubule epithelial cells. May regulate ciliary biogenesis through targeting of proteins to the cilia (PubMed:[37598857](#)). Plays a role in organogenesis, and is involved in the regulation of the Hippo signaling pathway (PubMed:[26967905](#)).

Cellular Location

Cytoplasm. Cytoplasm, cytoskeleton {ECO:0000250|UniProtKB:Q91ZR4}. Cell projection, cilium. Cytoplasm, cytoskeleton, microtubule organizing center, centrosome. Cytoplasm, cytoskeleton, cilium axoneme. Note=Predominantly cytoplasmic Localizes to the proximal region of the primary cilium and is not observed in dividing cells. {ECO:0000250|UniProtKB:Q91ZR4}

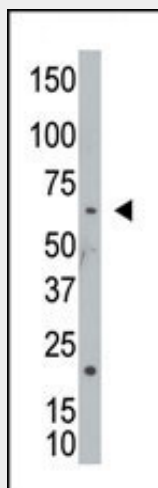
Tissue Location

Highest expression in thyroid, adrenal gland and skin. Low levels in spleen, colon and uterus. Overexpressed in breast tumors, with highest expression in infiltrating ductal carcinomas and moderate levels in mucinous adenocarcinoma

NEK8 Antibody (N-term) - Protocols

Provided below are standard protocols that you may find useful for product applications.

- [Western Blot](#)
- [Blocking Peptides](#)
- [Dot Blot](#)
- [Immunohistochemistry](#)
- [Immunofluorescence](#)
- [Immunoprecipitation](#)
- [Flow Cytometry](#)
- [Cell Culture](#)

NEK8 Antibody (N-term) - Images

The anti-NEK8 Pab (Cat. #AP7095a) is used in Western blot to detect NEK8 in A2058 cell lysate.

NEK8 Antibody (N-term) - Background

NEK8 is a member of the serine/threonine protein kinase family related to NIMA (never in mitosis, gene A) of *Aspergillus nidulans*. The encoded protein may play a role in cell cycle progression from

G2 to M phase. Mutations in the related mouse gene are associated with a disease phenotype that closely parallels the juvenile autosomal recessive form of polycystic kidney disease in humans.

NEK8 Antibody (N-term) - References

Valkova,N. et al. Mol. Cell Proteomics 4 (7), 1009-1018 (2005)
Bowers,A.J. et al. Gene 328, 135-142 (2004)
Holland,P.M. et al. J. Biol. Chem. 277 (18), 16229-16240 (2002)