

**MN1 Polyclonal Antibody**  
**Catalog # AP70985****Specification**

---

**MN1 Polyclonal Antibody - Product Information**

Application	WB
Primary Accession	<a href="#">Q10571</a>
Reactivity	Human
Host	Rabbit
Clonality	Polyclonal

**MN1 Polyclonal Antibody - Additional Information****Gene ID** 4330**Other Names**

MN1; Probable tumor suppressor protein MN1

**Dilution**

WB~~Western Blot: 1/500 - 1/2000. ELISA: 1/40000. Not yet tested in other applications.

**Format**

Liquid in PBS containing 50% glycerol, 0.5% BSA and 0.09% (W/V) sodium azide.

**Storage Conditions**

-20°C

**MN1 Polyclonal Antibody - Protein Information****Name** MN1**Function**

Transcriptional activator which specifically regulates expression of TBX22 in the posterior region of the developing palate. Required during later stages of palate development for growth and medial fusion of the palatal shelves. Promotes maturation and normal function of calvarial osteoblasts, including expression of the osteoclastogenic cytokine TNFSF11/RANKL. Necessary for normal development of the membranous bones of the skull (By similarity). May play a role in tumor suppression (Probable).

**Cellular Location**

Nucleus.

**Tissue Location**

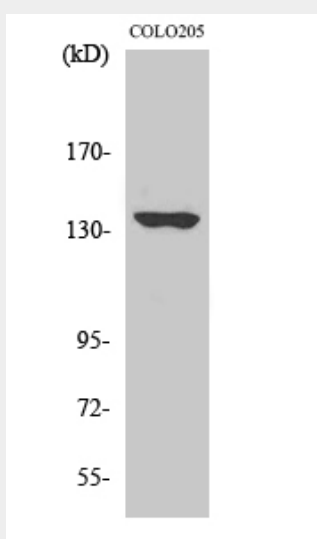
Widely expressed in fetal and adult tissues. Highest expression is observed in fetal brain and skeletal muscle, and adult skeletal muscle.

## MN1 Polyclonal Antibody - Protocols

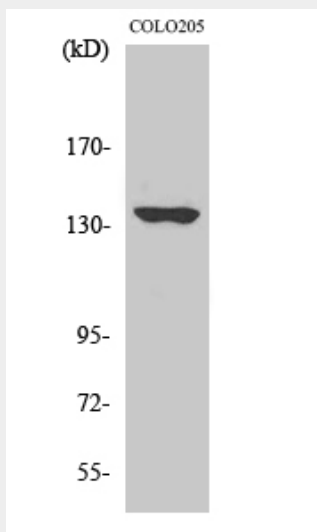
Provided below are standard protocols that you may find useful for product applications.

- [Western Blot](#)
- [Blocking Peptides](#)
- [Dot Blot](#)
- [Immunohistochemistry](#)
- [Immunofluorescence](#)
- [Immunoprecipitation](#)
- [Flow Cytometry](#)
- [Cell Culture](#)

## MN1 Polyclonal Antibody - Images



Western Blot analysis of various cells using MN1 Polyclonal Antibody diluted at 1:2000



Western Blot analysis of various cells using MN1 Polyclonal Antibody diluted at 1:2000

## MN1 Polyclonal Antibody - Background

Transcriptional activator which specifically regulates expression of TBX22 in the posterior region of

the developing palate. Required during later stages of palate development for growth and medial fusion of the palatal shelves. Promotes maturation and normal function of calvarial osteoblasts, including expression of the osteoclastogenic cytokine TNFSF11/RANKL. Necessary for normal development of the membranous bones of the skull (By similarity). May play a role in tumor suppression (Probable).