

**MRGX3 Polyclonal Antibody**  
**Catalog # AP71019****Specification**

---

**MRGX3 Polyclonal Antibody - Product Information**

Application	WB, IF
Primary Accession	<a href="#">Q96LB0</a>
Reactivity	Human
Host	Rabbit
Clonality	Polyclonal

**MRGX3 Polyclonal Antibody - Additional Information****Gene ID** 117195**Other Names**

MRGPRX3; MRGX3; SNSR1; SNSR2; Mas-related G-protein coupled receptor member X3; Sensory neuron-specific G-protein coupled receptor 1/2

**Dilution**

WB~~Western Blot: 1/500 - 1/2000. Immunofluorescence: 1/200 - 1/1000. ELISA: 1/10000. Not yet tested in other applications.

IF~~1:50~200

**Format**

Liquid in PBS containing 50% glycerol, 0.5% BSA and 0.09% (W/V) sodium azide.

**Storage Conditions**

-20°C

**MRGX3 Polyclonal Antibody - Protein Information****Name** MRGPRX3**Synonyms** MRGX3, SNSR1, SNSR2**Function**

Orphan receptor. Probably involved in the function of nociceptive neurons. May regulate nociceptor function and/or development, including the sensation or modulation of pain. Potently activated by enkephalins (By similarity).

**Cellular Location**

Cell membrane; Multi-pass membrane protein.

**Tissue Location**

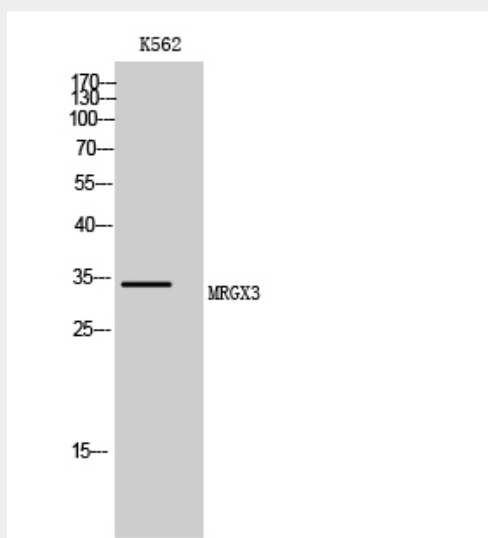
Uniquely localized in a subset of small dorsal root and trigeminal sensory neurons.

## MRGX3 Polyclonal Antibody - Protocols

Provided below are standard protocols that you may find useful for product applications.

- [Western Blot](#)
- [Blocking Peptides](#)
- [Dot Blot](#)
- [Immunohistochemistry](#)
- [Immunofluorescence](#)
- [Immunoprecipitation](#)
- [Flow Cytometry](#)
- [Cell Culture](#)

## MRGX3 Polyclonal Antibody - Images



## MRGX3 Polyclonal Antibody - Background

Orphan receptor. Probably involved in the function of nociceptive neurons. May regulate nociceptor function and/or development, including the sensation or modulation of pain. Potently activated by enkephalins (By similarity).