

**MRGX4 Polyclonal Antibody**  
**Catalog # AP71020****Specification**

---

**MRGX4 Polyclonal Antibody - Product Information**

|                   |                        |
|-------------------|------------------------|
| Application       | WB, IF                 |
| Primary Accession | <a href="#">Q96LA9</a> |
| Reactivity        | Human                  |
| Host              | Rabbit                 |
| Clonality         | Polyclonal             |

**MRGX4 Polyclonal Antibody - Additional Information****Gene ID** 117196**Other Names**

MRGPRX4; MRGX4; SNSR5; SNSR6; Mas-related G-protein coupled receptor member X4; Sensory neuron-specific G-protein coupled receptor 5/6

**Dilution**

WB~~Western Blot: 1/500 - 1/2000. Immunofluorescence: 1/200 - 1/1000. ELISA: 1/40000. Not yet tested in other applications.

IF~~1:50~200

**Format**

Liquid in PBS containing 50% glycerol, 0.5% BSA and 0.09% (W/V) sodium azide.

**Storage Conditions**

-20°C

**MRGX4 Polyclonal Antibody - Protein Information****Name** MRGPRX4**Synonyms** MRGX4, SNSR5, SNSR6**Function**

Orphan receptor. Probably involved in the function of nociceptive neurons. May regulate nociceptor function and/or development, including the sensation or modulation of pain. Potently activated by enkephalins (By similarity).

**Cellular Location**

Cell membrane; Multi-pass membrane protein.

**Tissue Location**

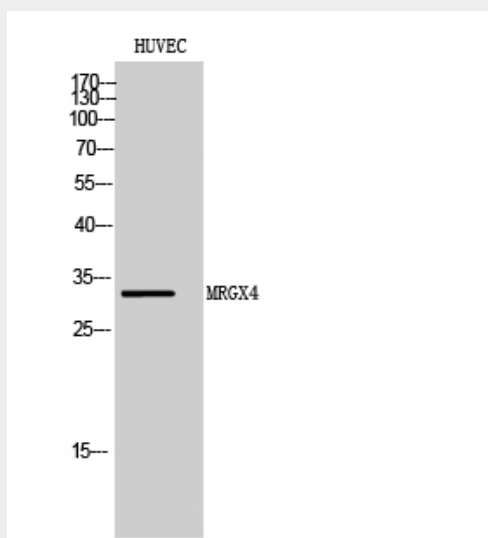
Uniquely localized in a subset of small dorsal root and trigeminal sensory neurons.

## MRGX4 Polyclonal Antibody - Protocols

Provided below are standard protocols that you may find useful for product applications.

- [Western Blot](#)
- [Blocking Peptides](#)
- [Dot Blot](#)
- [Immunohistochemistry](#)
- [Immunofluorescence](#)
- [Immunoprecipitation](#)
- [Flow Cytometry](#)
- [Cell Culture](#)

## MRGX4 Polyclonal Antibody - Images



## MRGX4 Polyclonal Antibody - Background

Orphan receptor. Probably involved in the function of nociceptive neurons. May regulate nociceptor function and/or development, including the sensation or modulation of pain. Potently activated by enkephalins (By similarity).