

MRP-L33 Polyclonal Antibody
Catalog # AP71041**Specification**

MRP-L33 Polyclonal Antibody - Product Information

Application	IHC-P
Primary Accession	O75394
Reactivity	Human
Host	Rabbit
Clonality	Polyclonal

MRP-L33 Polyclonal Antibody - Additional Information**Gene ID** 9553**Other Names**

MRPL33; C2orf1; 39S ribosomal protein L33; mitochondrial; L33mt; MRP-L33

Dilution

IHC-P~~N/A

Format

Liquid in PBS containing 50% glycerol, 0.5% BSA and 0.09% (W/V) sodium azide.

Storage Conditions

-20°C

MRP-L33 Polyclonal Antibody - Protein Information**Name** MRPL33**Synonyms** C2orf1**Cellular Location**

Mitochondrion

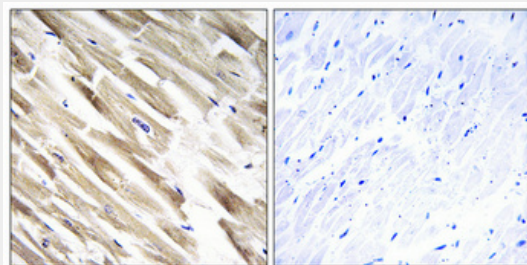
MRP-L33 Polyclonal Antibody - Protocols

Provided below are standard protocols that you may find useful for product applications.

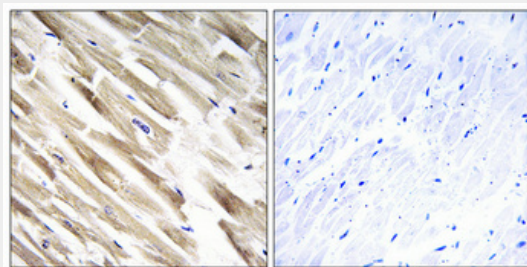
- [Western Blot](#)
- [Blocking Peptides](#)
- [Dot Blot](#)
- [Immunohistochemistry](#)
- [Immunofluorescence](#)
- [Immunoprecipitation](#)

- [Flow Cytometry](#)
- [Cell Culture](#)

MRP-L33 Polyclonal Antibody - Images



Immunohistochemical analysis of paraffin-embedded Human heart. Antibody was diluted at 1:100(4°,overnight). High-pressure and temperature Tris-EDTA,pH8.0 was used for antigen retrieval. Negative contrl (right) obtaned from antibody was pre-absorbed by immunogen peptide.



Immunohistochemical analysis of paraffin-embedded Human heart. Antibody was diluted at 1:100(4°,overnight). High-pressure and temperature Tris-EDTA,pH8.0 was used for antigen retrieval. Negative contrl (right) obtaned from antibody was pre-absorbed by immunogen peptide.