

**MRP-L4 Polyclonal Antibody**  
**Catalog # AP71044****Specification**

---

**MRP-L4 Polyclonal Antibody - Product Information**

Application	WB, IHC-P
Primary Accession	<a href="#">Q9BYD3</a>
Reactivity	Human, Mouse
Host	Rabbit
Clonality	Polyclonal

**MRP-L4 Polyclonal Antibody - Additional Information****Gene ID** 51073**Other Names**

MRPL4; CDABP0091; CGI-28; 39S ribosomal protein L4; mitochondrial; L4mt; MRP-L4

**Dilution**

WB~~Western Blot: 1/500 - 1/2000. Immunohistochemistry: 1/100 - 1/300. ELISA: 1/20000. Not yet tested in other applications.

IHC-P~~N/A

**Format**

Liquid in PBS containing 50% glycerol, 0.5% BSA and 0.09% (W/V) sodium azide.

**Storage Conditions**

-20°C

**MRP-L4 Polyclonal Antibody - Protein Information****Name** MRPL4**Cellular Location**

Mitochondrion

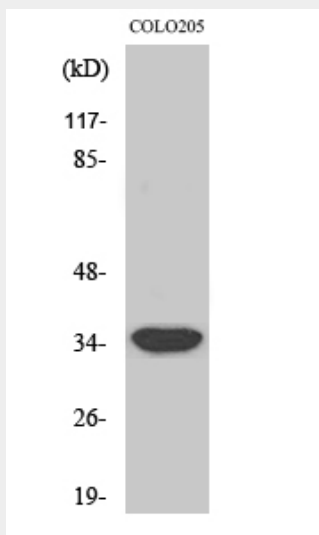
**MRP-L4 Polyclonal Antibody - Protocols**

Provided below are standard protocols that you may find useful for product applications.

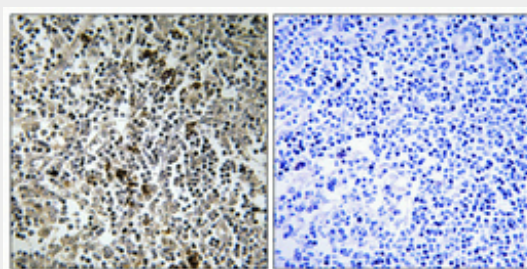
- [Western Blot](#)
- [Blocking Peptides](#)
- [Dot Blot](#)
- [Immunohistochemistry](#)
- [Immunofluorescence](#)
- [Immunoprecipitation](#)

- [Flow Cytometry](#)
- [Cell Culture](#)

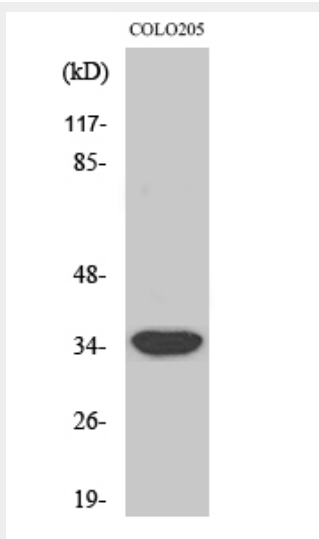
## MRP-L4 Polyclonal Antibody - Images



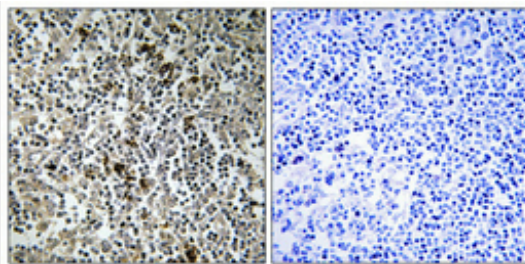
Western Blot analysis of various cells using MRP-L4 Polyclonal Antibody



Immunohistochemical analysis of paraffin-embedded Human lung cancer. Antibody was diluted at 1:100(4°,overnight). High-pressure and temperature Tris-EDTA,pH8.0 was used for antigen retrieval. Negative contrl (right) obtained from antibody was pre-absorbed by immunogen peptide.



Western Blot analysis of various cells using MRP-L4 Polyclonal Antibody



Immunohistochemical analysis of paraffin-embedded Human lung cancer. Antibody was diluted at 1:100(4°,overnight). High-pressure and temperature Tris-EDTA,pH8.0 was used for antigen retrieval. Negative control (right) obtained from antibody was pre-absorbed by immunogen peptide.