

MSH3 Polyclonal Antibody
Catalog # AP71080**Specification**

MSH3 Polyclonal Antibody - Product Information

Application	WB, IHC-P
Primary Accession	P20585
Reactivity	Human
Host	Rabbit
Clonality	Polyclonal

MSH3 Polyclonal Antibody - Additional Information**Gene ID** 4437**Other Names**

MSH3; DUC1; DUG; DNA mismatch repair protein Msh3; hMSH3; Divergent upstream protein; DUP; Mismatch repair protein 1; MRP1

Dilution

WB~~Western Blot: 1/500 - 1/2000. Immunohistochemistry: 1/100 - 1/300. ELISA: 1/20000. Not yet tested in other applications.

IHC-P~~N/A

Format

Liquid in PBS containing 50% glycerol, 0.5% BSA and 0.09% (W/V) sodium azide.

Storage Conditions

-20°C

MSH3 Polyclonal Antibody - Protein Information**Name** MSH3**Synonyms** DUC1, DUG**Function**

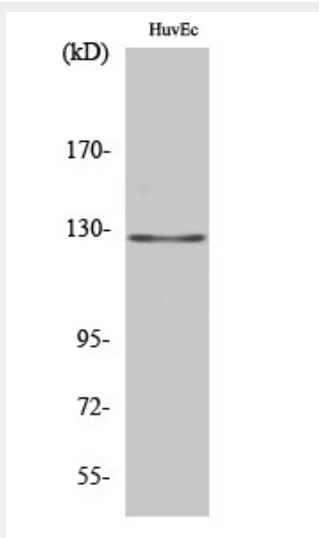
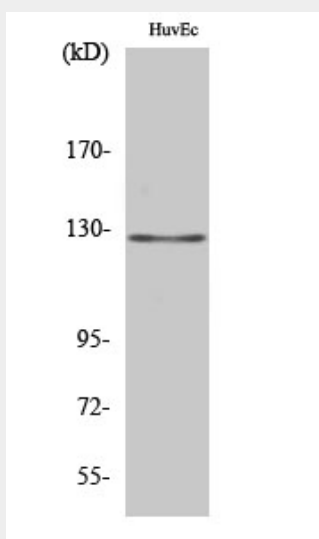
Component of the post-replicative DNA mismatch repair system (MMR). Heterodimerizes with MSH2 to form MutS beta which binds to DNA mismatches thereby initiating DNA repair. When bound, the MutS beta heterodimer bends the DNA helix and shields approximately 20 base pairs. MutS beta recognizes large insertion-deletion loops (IDL) up to 13 nucleotides long. After mismatch binding, forms a ternary complex with the MutL alpha heterodimer, which is thought to be responsible for directing the downstream MMR events, including strand discrimination, excision, and resynthesis.

MSH3 Polyclonal Antibody - Protocols

Provided below are standard protocols that you may find useful for product applications.

- [Western Blot](#)
- [Blocking Peptides](#)
- [Dot Blot](#)
- [Immunohistochemistry](#)
- [Immunofluorescence](#)
- [Immunoprecipitation](#)
- [Flow Cytometry](#)
- [Cell Culture](#)

MSH3 Polyclonal Antibody - Images



MSH3 Polyclonal Antibody - Background

Component of the post-replicative DNA mismatch repair system (MMR). Heterodimerizes with MSH2 to form MutS beta which binds to DNA mismatches thereby initiating DNA repair. When bound, the MutS beta heterodimer bends the DNA helix and shields approximately 20 base pairs.

MutS beta recognizes large insertion- deletion loops (IDL) up to 13 nucleotides long. After mismatch binding, forms a ternary complex with the MutL alpha heterodimer, which is thought to be responsible for directing the downstream MMR events, including strand discrimination, excision, and resynthesis.