

**MSY2 Polyclonal Antibody**  
**Catalog # AP71089****Specification**

---

**MSY2 Polyclonal Antibody - Product Information**

Application	WB, IHC-P, IF
Primary Accession	<a href="#">Q9Y2T7</a>
Reactivity	Human, Mouse
Host	Rabbit
Clonality	Polyclonal

**MSY2 Polyclonal Antibody - Additional Information****Gene ID** 51087**Other Names**

YBX2; CSDA3; MSY2; Y-box-binding protein 2; Contrin; DNA-binding protein C; Dbpc; Germ cell-specific Y-box-binding protein; MSY2 homolog

**Dilution**

WB~~Western Blot: 1/500 - 1/2000. Immunohistochemistry: 1/100 - 1/300. Immunofluorescence: 1/200 - 1/1000. ELISA: 1/10000. Not yet tested in other applications.

IHC-P~~N/A

IF~~1:50~200

**Format**

Liquid in PBS containing 50% glycerol, 0.5% BSA and 0.09% (W/V) sodium azide.

**Storage Conditions**

-20°C

**MSY2 Polyclonal Antibody - Protein Information****Name** YBX2**Synonyms** CSDA3, MSY2**Function**

Major constituent of messenger ribonucleoprotein particles (mRNPs). Involved in the regulation of the stability and/or translation of germ cell mRNAs. Binds to Y-box consensus promoter element. Binds to full-length mRNA with high affinity in a sequence-independent manner. Binds to short RNA sequences containing the consensus site 5'-UCCAUCA- 3' with low affinity and limited sequence specificity. Its binding with maternal mRNAs is necessary for its cytoplasmic retention. May mark specific mRNAs (those transcribed from Y-box promoters) in the nucleus for cytoplasmic storage, thereby linking transcription and mRNA storage/translational delay (By similarity).

**Cellular Location**

Cytoplasm. Nucleus

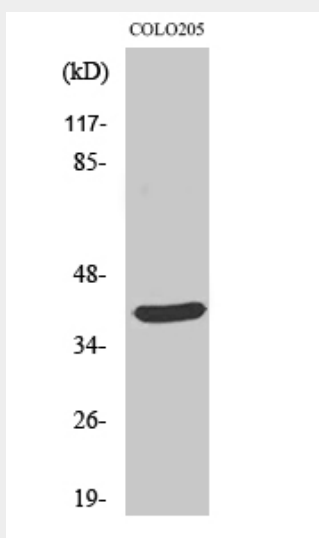
**Tissue Location**

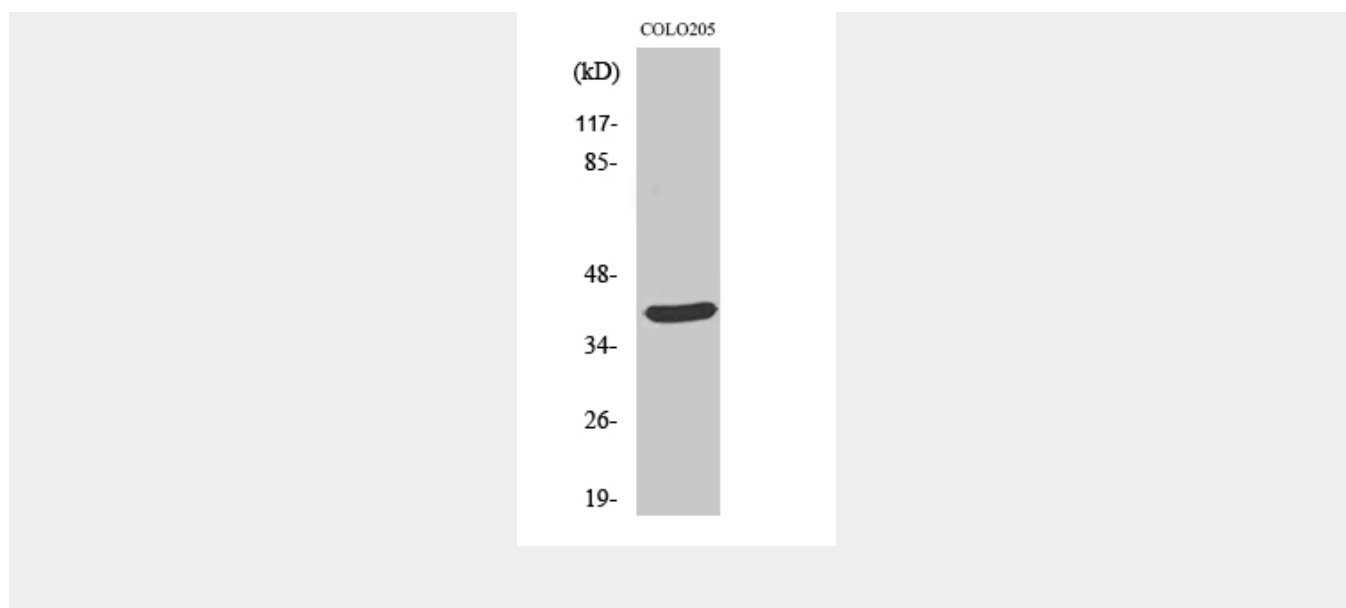
Expressed in oocytes and testicular germ cells in the stage of spermatogonia to spermatocyte. Also observed placental trophoblasts, as well as in vascular smooth muscle cells in the pulmonary artery, myocardium, and skeletal muscle. Undetectable in epithelial cells in respiratory, gastrointestinal, and urogenital tracts. Up-regulated in various carcinomas and germ cell tumors (at protein level).

**MSY2 Polyclonal Antibody - Protocols**

Provided below are standard protocols that you may find useful for product applications.

- [Western Blot](#)
- [Blocking Peptides](#)
- [Dot Blot](#)
- [Immunohistochemistry](#)
- [Immunofluorescence](#)
- [Immunoprecipitation](#)
- [Flow Cytometry](#)
- [Cell Culture](#)

**MSY2 Polyclonal Antibody - Images**



### **MSY2 Polyclonal Antibody - Background**

Major constituent of messenger ribonucleoprotein particles (mRNPs). Involved in the regulation of the stability and/or translation of germ cell mRNAs. Binds to Y-box consensus promoter element. Binds to full-length mRNA with high affinity in a sequence-independent manner. Binds to short RNA sequences containing the consensus site 5'-UCCAUCA-3' with low affinity and limited sequence specificity. Its binding with maternal mRNAs is necessary for its cytoplasmic retention. May mark specific mRNAs (those transcribed from Y-box promoters) in the nucleus for cytoplasmic storage, thereby linking transcription and mRNA storage/translational delay (By similarity).