

ADCK5 Antibody (C-term)
Purified Rabbit Polyclonal Antibody (Pab)
Catalog # AP7108b**Specification**

ADCK5 Antibody (C-term) - Product Information

Application	WB, IHC-P,E
Primary Accession	Q3MIX3
Reactivity	Human
Host	Rabbit
Clonality	Polyclonal
Isotype	Rabbit IgG
Calculated MW	65828
Antigen Region	434-464

ADCK5 Antibody (C-term) - Additional Information**Gene ID** 203054**Other Names**

Uncharacterized aarF domain-containing protein kinase 5, 2711-, ADCK5

Target/Specificity

This ADCK5 antibody is generated from rabbits immunized with a KLH conjugated synthetic peptide between 434-464 amino acids from the C-terminal region of human ADCK5.

DilutionWB~~1:1000
IHC-P~~1:50~100**Format**

Purified polyclonal antibody supplied in PBS with 0.09% (W/V) sodium azide. This antibody is prepared by Saturated Ammonium Sulfate (SAS) precipitation followed by dialysis against PBS.

Storage

Maintain refrigerated at 2-8°C for up to 2 weeks. For long term storage store at -20°C in small aliquots to prevent freeze-thaw cycles.

Precautions

ADCK5 Antibody (C-term) is for research use only and not for use in diagnostic or therapeutic procedures.

ADCK5 Antibody (C-term) - Protein Information**Name** ADCK5

Function The function of this protein is not yet clear. It is not known if it has protein kinase activity and what type of substrate it would phosphorylate (Ser, Thr or Tyr).

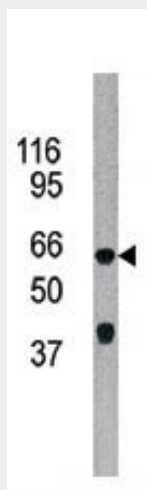
Cellular Location

Membrane; Single-pass membrane protein

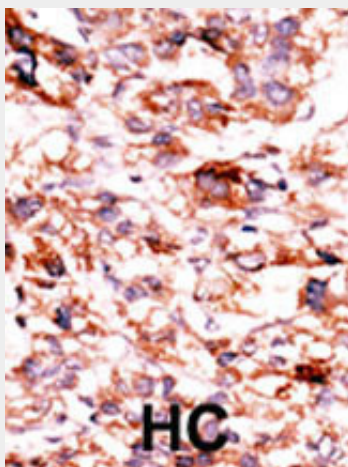
ADCK5 Antibody (C-term) - Protocols

Provided below are standard protocols that you may find useful for product applications.

- [Western Blot](#)
- [Blocking Peptides](#)
- [Dot Blot](#)
- [Immunohistochemistry](#)
- [Immunofluorescence](#)
- [Immunoprecipitation](#)
- [Flow Cytometry](#)
- [Cell Culture](#)

ADCK5 Antibody (C-term) - Images

The anti-ADCK5 Pab (Cat. #AP7108b) is used in Western blot to detect ADCK5 in 293 cell line lysate.



Formalin-fixed and paraffin-embedded human cancer tissue reacted with the primary antibody, which was peroxidase-conjugated to the secondary antibody, followed by AEC staining. This data

demonstrates the use of this antibody for immunohistochemistry; clinical relevance has not been evaluated. BC = breast carcinoma; HC = hepatocarcinoma.

ADCK5 Antibody (C-term) - Background

ADCK5 is member of the AarF domain containing kinase family.

ADCK5 Antibody (C-term) - References

Ota, T., et al., Nat. Genet. 36(1):40-45 (2004).