

**MMP-16 Polyclonal Antibody**  
**Catalog # AP71095****Specification**

---

**MMP-16 Polyclonal Antibody - Product Information**

Application	WB, IHC-P
Primary Accession	<a href="#">P51512</a>
Reactivity	Human, Mouse, Rat
Host	Rabbit
Clonality	Polyclonal

**MMP-16 Polyclonal Antibody - Additional Information****Gene ID** 4325**Other Names**

MMP16; MMPX2; Matrix metalloproteinase-16; MMP-16; MMP-X2; Membrane-type matrix metalloproteinase 3; MT-MMP 3; MTMMP3; Membrane-type-3 matrix metalloproteinase; MT3-MMP; MT3MMP

**Dilution**

WB~~Western Blot: 1/500 - 1/2000. Immunohistochemistry: 1/100 - 1/300. ELISA: 1/10000. Not yet tested in other applications.  
IHC-P~~N/A

**Format**

Liquid in PBS containing 50% glycerol, 0.5% BSA and 0.09% (W/V) sodium azide.

**Storage Conditions**

-20°C

**MMP-16 Polyclonal Antibody - Protein Information****Name** MMP16 ([HGNC:7162](#))**Function**

Endopeptidase that degrades various components of the extracellular matrix, such as collagen type III and fibronectin. Activates progelatinase A. Involved in the matrix remodeling of blood vessels. Isoform short cleaves fibronectin and also collagen type III, but at lower rate. It has no effect on type I, II, IV and V collagen. However, upon interaction with CSPG4, it may be involved in degradation and invasion of type I collagen by melanoma cells.

**Cellular Location**

[Isoform Long]: Cell membrane; Single-pass type I membrane protein; Extracellular side.  
Note=Localized at the cell surface of melanoma cells

**Tissue Location**

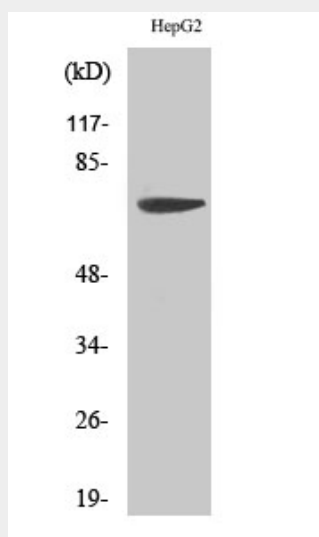
Expressed in heart, brain, placenta, ovary and small intestine. Isoform Short is found in the ovary

## MMP-16 Polyclonal Antibody - Protocols

Provided below are standard protocols that you may find useful for product applications.

- [Western Blot](#)
- [Blocking Peptides](#)
- [Dot Blot](#)
- [Immunohistochemistry](#)
- [Immunofluorescence](#)
- [Immunoprecipitation](#)
- [Flow Cytometry](#)
- [Cell Culture](#)

## MMP-16 Polyclonal Antibody - Images



## MMP-16 Polyclonal Antibody - Background

Endopeptidase that degrades various components of the extracellular matrix, such as collagen type III and fibronectin. Activates progelatinase A. Involved in the matrix remodeling of blood vessels. Isoform short cleaves fibronectin and also collagen type III, but at lower rate. It has no effect on type I, II, IV and V collagen. However, upon interaction with CSPG4, it may be involved in degradation and invasion of type I collagen by melanoma cells.