

MYH14 Polyclonal Antibody
Catalog # AP71116**Specification**

MYH14 Polyclonal Antibody - Product Information

| | |
|-------------------|------------------------|
| Application | WB, IHC-P |
| Primary Accession | Q7Z406 |
| Reactivity | Human, Mouse |
| Host | Rabbit |
| Clonality | Polyclonal |

MYH14 Polyclonal Antibody - Additional Information**Gene ID** 79784**Other Names**

MYH14; KIAA2034; FP17425; Myosin-14; Myosin heavy chain 14; Myosin heavy chain; non-muscle IIC; Non-muscle myosin heavy chain IIC; NMHC II-C

Dilution

WB~~Western Blot: 1/500 - 1/2000. Immunohistochemistry: 1/100 - 1/300. ELISA: 1/5000. Not yet tested in other applications.

IHC-P~~N/A

Format

Liquid in PBS containing 50% glycerol, 0.5% BSA and 0.09% (W/V) sodium azide.

Storage Conditions

-20°C

MYH14 Polyclonal Antibody - Protein Information**Name** MYH14**Synonyms** KIAA2034**Function**

Cellular myosin that appears to play a role in cytokinesis, cell shape, and specialized functions such as secretion and capping.

Tissue Location

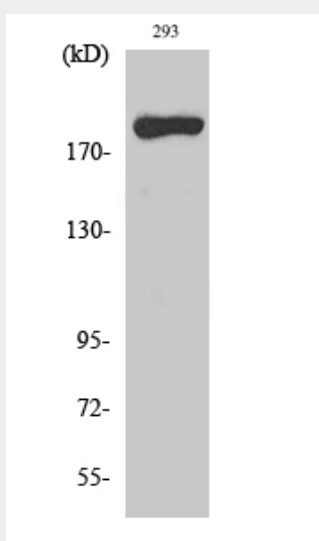
High levels of expression are found in brain (highest in corpus callosum), heart, kidney, liver, lung, small intestine, colon and skeletal muscle. Expression is low in organs composed mainly of smooth muscle, such as aorta, uterus and urinary bladder. No detectable expression is found in thymus, spleen, placenta and lymphocytes.

MYH14 Polyclonal Antibody - Protocols

Provided below are standard protocols that you may find useful for product applications.

- [Western Blot](#)
- [Blocking Peptides](#)
- [Dot Blot](#)
- [Immunohistochemistry](#)
- [Immunofluorescence](#)
- [Immunoprecipitation](#)
- [Flow Cytometry](#)
- [Cell Culture](#)

MYH14 Polyclonal Antibody - Images



Western Blot analysis of various cells using MYH14 Polyclonal Antibody diluted at 1:1000

MYH14 Polyclonal Antibody - Background

Cellular myosin that appears to play a role in cytokinesis, cell shape, and specialized functions such as secretion and capping.