

N4BP1 Polyclonal Antibody
Catalog # AP71145**Specification****N4BP1 Polyclonal Antibody - Product Information**

Application	WB, IHC-P
Primary Accession	O75113
Reactivity	Human
Host	Rabbit
Clonality	Polyclonal

N4BP1 Polyclonal Antibody - Additional Information**Gene ID** 9683**Other Names**

N4BP1; KIAA0615; NEDD4-binding protein 1; N4BP1

Dilution

WB~~Western Blot: 1/500 - 1/2000. Immunohistochemistry: 1/100 - 1/300. ELISA: 1/40000. Not yet tested in other applications.

IHC-P~~N/A

Format

Liquid in PBS containing 50% glycerol, 0.5% BSA and 0.09% (W/V) sodium azide.

Storage Conditions

-20°C

N4BP1 Polyclonal Antibody - Protein Information**Name** N4BP1 ([HGNC:29850](#))**Function**

Potent suppressor of cytokine production that acts as a regulator of innate immune signaling and inflammation. Acts as a key negative regulator of select cytokine and chemokine responses elicited by TRIF-independent Toll-like receptors (TLRs), thereby limiting inflammatory cytokine responses to minor insults. In response to more threatening pathogens, cleaved by CASP8 downstream of TLR3 or TLR4, leading to its inactivation, thereby allowing production of inflammatory cytokines (By similarity). Acts as a restriction factor against some viruses, such as HIV-1: restricts HIV-1 replication by binding to HIV-1 mRNAs and mediating their degradation via its ribonuclease activity (PubMed:31133753). Also acts as an inhibitor of the E3 ubiquitin-protein ligase ITCH: acts by interacting with the second WW domain of ITCH, leading to compete with ITCH's substrates and impairing ubiquitination of substrates (By similarity).

Cellular Location

Cytoplasm, cytosol {ECO:0000250|UniProtKB:Q6A037}. Nucleus

{ECO:0000250|UniProtKB:Q6A037} Nucleus, nucleolus {ECO:0000250|UniProtKB:Q6A037}.
Nucleus, PML body {ECO:0000250|UniProtKB:Q6A037}. Note=Primarily localizes to the nucleolus.
Also localizes to the PML nuclear bodies, when desumoylated {ECO:0000250|UniProtKB:Q6A037}

Tissue Location

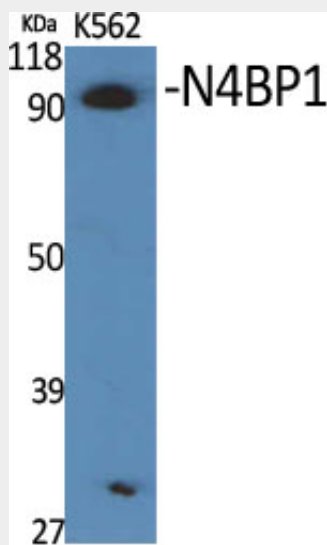
Detected in heart, lung, brain, liver, skeletal muscle, pancreas, kidney, spleen, testis and ovary

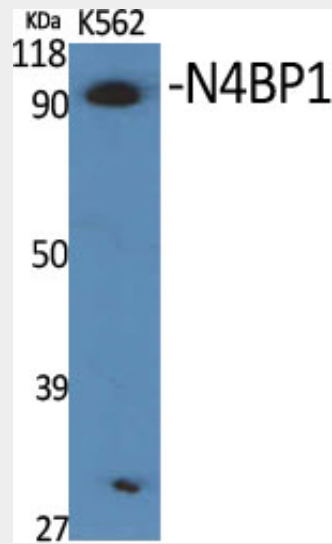
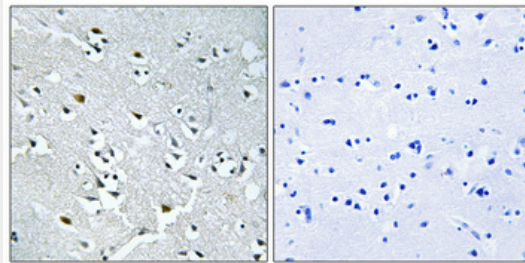
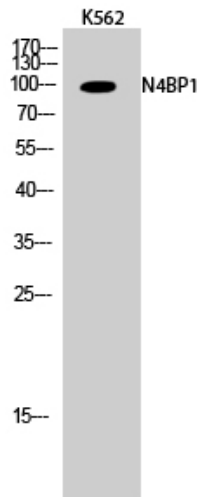
N4BP1 Polyclonal Antibody - Protocols

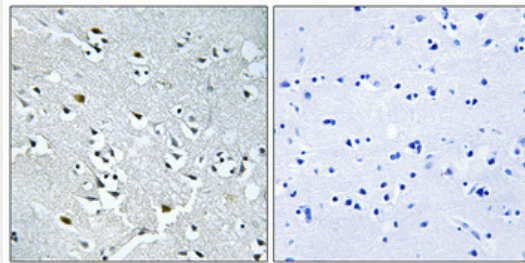
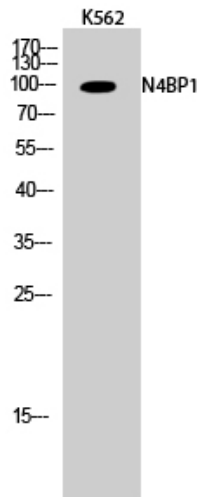
Provided below are standard protocols that you may find useful for product applications.

- [Western Blot](#)
- [Blocking Peptides](#)
- [Dot Blot](#)
- [Immunohistochemistry](#)
- [Immunofluorescence](#)
- [Immunoprecipitation](#)
- [Flow Cytometry](#)
- [Cell Culture](#)

N4BP1 Polyclonal Antibody - Images







N4BP1 Polyclonal Antibody - Background

Inhibitor of the E3 ubiquitin-protein ligase ITCH. Acts by interacting with the second WW domain of ITCH, leading to compete with ITCH's substrates and impairing ubiquitination of substrates (By similarity).