

NCKX4 Polyclonal Antibody
Catalog # AP71177**Specification**

NCKX4 Polyclonal Antibody - Product Information

Application	WB
Primary Accession	Q8NFF2
Reactivity	Human, Mouse, Rat
Host	Rabbit
Clonality	Polyclonal

NCKX4 Polyclonal Antibody - Additional Information**Gene ID** 123041**Other Names**

SLC24A4; NCKX4; Sodium/potassium/calcium exchanger 4; Na(+)/K(+)/Ca(2+)-exchange protein 4; Solute carrier family 24 member 4

Dilution

WB~~Western Blot: 1/500 - 1/2000. ELISA: 1/40000. Not yet tested in other applications.

Format

Liquid in PBS containing 50% glycerol, 0.5% BSA and 0.09% (W/V) sodium azide.

Storage Conditions

-20°C

NCKX4 Polyclonal Antibody - Protein Information**Name** SLC24A4 ([HGNC:10978](#))**Function**

Calcium, potassium:sodium antiporter that transports 1 Ca(2+) and 1 K(+) in exchange for 4 Na(+) (PubMed:<[a href="http://www.uniprot.org/citations/12379639" target="_blank">12379639](http://www.uniprot.org/citations/12379639)>, PubMed:<[a href="http://www.uniprot.org/citations/26631410" target="_blank">26631410](http://www.uniprot.org/citations/26631410)>). Controls the rapid response termination and proper regulation of adaptation in olfactory sensory neurons (OSNs) which subsequently influences how odor information is encoded and perceived (By similarity). May play a role in calcium transport during amelogenesis (PubMed:<[a href="http://www.uniprot.org/citations/23375655" target="_blank">23375655](http://www.uniprot.org/citations/23375655)>, PubMed:<[a href="http://www.uniprot.org/citations/24621671" target="_blank">24621671](http://www.uniprot.org/citations/24621671)>).

Cellular Location

Cell membrane; Multi-pass membrane protein. Cytoplasm {ECO:0000250|UniProtKB:Q8CGQ8}

Tissue Location

Expressed abundantly in all regions of the brain, aorta, lung and thymus (PubMed:12379639).

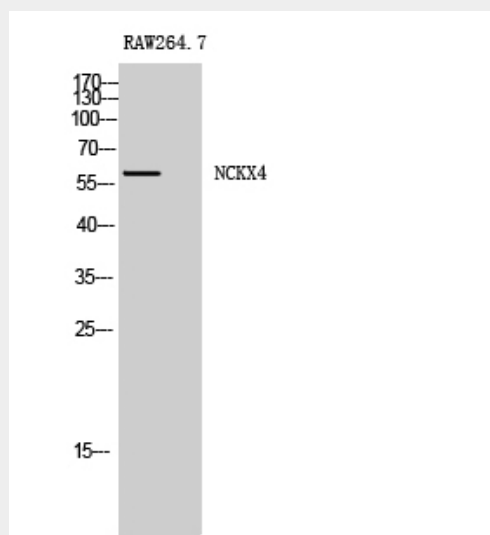
Expressed at lower levels in the stomach and intestine (PubMed:12379639)

NCKX4 Polyclonal Antibody - Protocols

Provided below are standard protocols that you may find useful for product applications.

- [Western Blot](#)
- [Blocking Peptides](#)
- [Dot Blot](#)
- [Immunohistochemistry](#)
- [Immunofluorescence](#)
- [Immunoprecipitation](#)
- [Flow Cytometry](#)
- [Cell Culture](#)

NCKX4 Polyclonal Antibody - Images



NCKX4 Polyclonal Antibody - Background

Transports 1 Ca(2+) and 1 K(+) in exchange for 4 Na(+). Controls the rapid response termination and proper regulation of adaptation in olfactory sensory neurons (OSNs) which subsequently influences how odor information is encoded and perceived. May play a role in calcium transport during amelogenesis (By similarity).