

**Nephrocystin-5 Polyclonal Antibody**  
**Catalog # AP71221****Specification****Nephrocystin-5 Polyclonal Antibody - Product Information**

Application	WB
Primary Accession	<a href="#">Q15051</a>
Reactivity	Human
Host	Rabbit
Clonality	Polyclonal

**Nephrocystin-5 Polyclonal Antibody - Additional Information****Gene ID** 9657**Other Names**

IQCB1; KIAA0036; NPHP5; OK/SW-cl.85; IQ calmodulin-binding motif-containing protein 1; Nephrocystin-5; p53 and DNA damage-regulated IQ motif protein; PIQ

**Dilution**

WB~~Western Blot: 1/500 - 1/2000. Immunohistochemistry: 1/100 - 1/300. ELISA: 1/40000. Not yet tested in other applications.

**Format**

Liquid in PBS containing 50% glycerol, 0.5% BSA and 0.09% (W/V) sodium azide.

**Storage Conditions**

-20°C

**Nephrocystin-5 Polyclonal Antibody - Protein Information****Name** IQCB1**Synonyms** KIAA0036, NPHP5**Function**

Involved in ciliogenesis. The function in an early step in cilia formation depends on its association with CEP290/NPHP6 (PubMed:<<http://www.uniprot.org/citations/21565611>>21565611</a>, PubMed:<<http://www.uniprot.org/citations/23446637>>23446637</a>). Involved in regulation of the BBSome complex integrity, specifically for presence of BBS2 and BBS5 in the complex, and in ciliary targeting of selected BBSome cargos. May play a role in controlling entry of the BBSome complex to cilia possibly implicating CEP290/NPHP6 (PubMed:<<http://www.uniprot.org/citations/25552655>>25552655</a>).

**Cellular Location**

Cytoplasm, cytoskeleton, microtubule organizing center, centrosome. Cytoplasm, cytoskeleton, microtubule organizing center, centrosome, centriole. Note=Localization to the centrosome

depends on the interaction with CEP290/NPHP6

#### Tissue Location

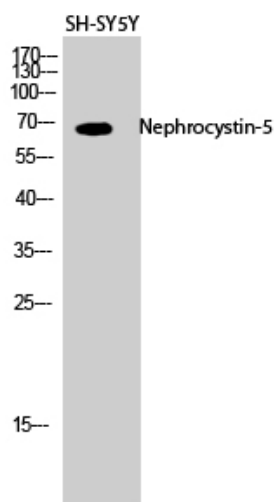
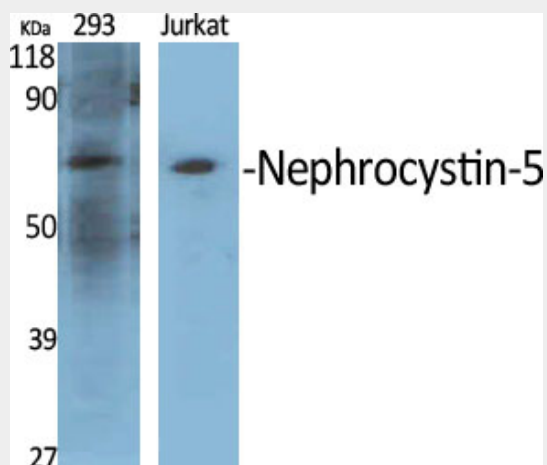
Ubiquitously expressed in fetal and adult tissues. Localized to the outer segments and connecting cilia of photoreceptor cells. Up-regulated in a number of primary colorectal and gastric tumors.

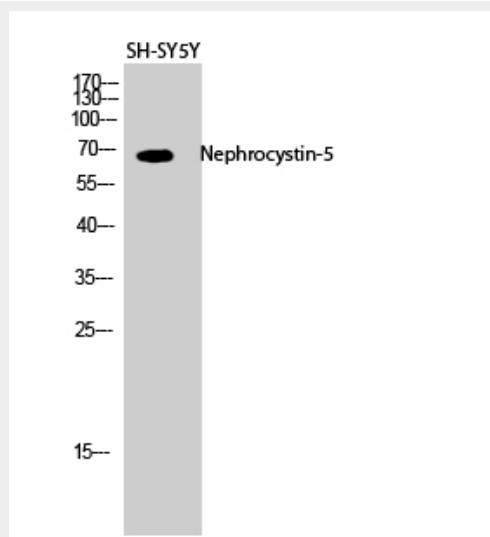
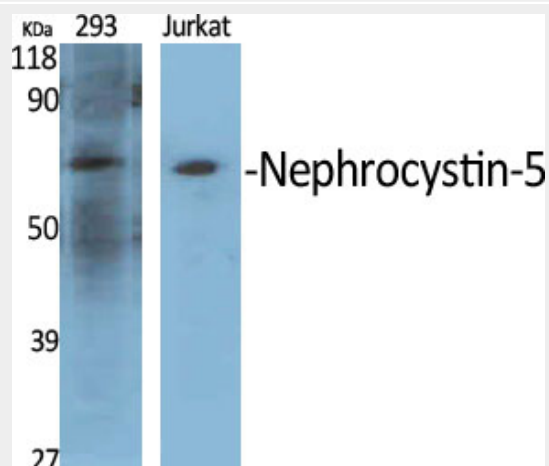
#### Nephrocystin-5 Polyclonal Antibody - Protocols

Provided below are standard protocols that you may find useful for product applications.

- [Western Blot](#)
- [Blocking Peptides](#)
- [Dot Blot](#)
- [Immunohistochemistry](#)
- [Immunofluorescence](#)
- [Immunoprecipitation](#)
- [Flow Cytometry](#)
- [Cell Culture](#)

#### Nephrocystin-5 Polyclonal Antibody - Images





### Nephrocystin-5 Polyclonal Antibody - Background

Involved in ciliogenesis. The function in an early step in cilia formation depends on its association with CEP290/NPHP6 (PubMed:21565611, PubMed:23446637). Involved in regulation of the BBSome complex integrity, specifically for presence of BBS2 and BBS5 in the complex, and in ciliary targeting of selected BBSome cargos. May play a role in controlling entry of the BBSome complex to cilia possibly implicating CEP290/NPHP6 (PubMed:25552655).