

CDKL2 Antibody (Center)
Purified Rabbit Polyclonal Antibody (Pab)
Catalog # AP7122a**Specification**

CDKL2 Antibody (Center) - Product Information

Application	WB,E
Primary Accession	Q92772
Other Accession	Q4R7T5
Reactivity	Human
Predicted	Monkey
Host	Rabbit
Clonality	Polyclonal
Isotype	Rabbit IgG
Calculated MW	56019
Antigen Region	226-255

CDKL2 Antibody (Center) - Additional Information**Gene ID** 8999**Other Names**

Cyclin-dependent kinase-like 2, Protein kinase p56 KKIAMRE, Serine/threonine-protein kinase KKIAMRE, CDKL2

Target/Specificity

This CDKL2 antibody is generated from rabbits immunized with a KLH conjugated synthetic peptide between 226-255 amino acids from the Central region of human CDKL2.

Dilution

WB~~1:1000

E~~Use at an assay dependent concentration.

Format

Purified polyclonal antibody supplied in PBS with 0.09% (W/V) sodium azide. This antibody is prepared by Saturated Ammonium Sulfate (SAS) precipitation followed by dialysis against PBS.

Storage

Maintain refrigerated at 2-8°C for up to 2 weeks. For long term storage store at -20°C in small aliquots to prevent freeze-thaw cycles.

Precautions

CDKL2 Antibody (Center) is for research use only and not for use in diagnostic or therapeutic procedures.

CDKL2 Antibody (Center) - Protein Information**Name** CDKL2 ([HGNC:1782](#))

Cellular Location

Cytoplasm. Nucleus

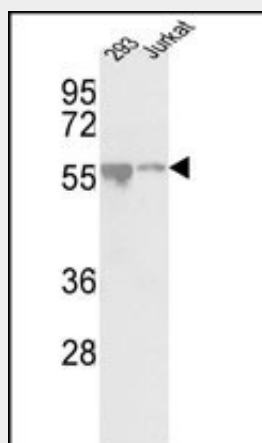
Tissue Location

Expressed in testis and kidney, and at lower level in brain and lung.

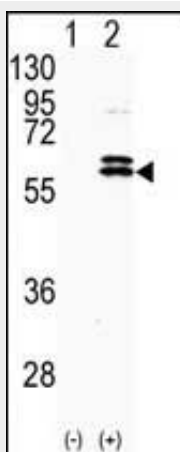
CDKL2 Antibody (Center) - Protocols

Provided below are standard protocols that you may find useful for product applications.

- [Western Blot](#)
- [Blocking Peptides](#)
- [Dot Blot](#)
- [Immunohistochemistry](#)
- [Immunofluorescence](#)
- [Immunoprecipitation](#)
- [Flow Cytometry](#)
- [Cell Culture](#)

CDKL2 Antibody (Center) - Images

Western blot analysis of CDKL2 Center (Cat.#AP7122a) in 293, Jurkat cell line lysates (35ug/lane). CDKL2 (arrow) was detected using the purified Pab.



Western blot analysis of CDKL2 (arrow) using rabbit polyclonal CDKL2 Antibody (Center)

(Cat.#AP7122a).293 cell lysates (2 ug/lane) either nontransfected (Lane 1) or transiently transfected with the CDKL2 gene (Lane 2) (Origene Technologies).

CDKL2 Antibody (Center) - Background

CDKL2 is a member of a large family of CDC2-related serine/threonine protein kinases. It accumulates primarily in the cytoplasm, with a lower level in the nucleus.

CDKL2 Antibody (Center) - References

Taglienti, C.A., et al., Oncogene 13(12):2563-2574 (1996).