

ERN2 Antibody (N-term)
Purified Rabbit Polyclonal Antibody (Pab)
Catalog # AP7128a**Specification**

ERN2 Antibody (N-term) - Product Information

Application	WB,E
Primary Accession	Q76MJ5
Reactivity	Human
Host	Rabbit
Clonality	Polyclonal
Isotype	Rabbit IgG
Antigen Region	39-72

ERN2 Antibody (N-term) - Additional Information**Gene ID** 10595**Other Names**

Serine/threonine-protein kinase/endoribonuclease IRE2, Endoplasmic reticulum-to-nucleus signaling 2, Inositol-requiring protein 2, hIRE2p, Ire1-beta, IRE1b, Serine/threonine-protein kinase, Endoribonuclease, 3126-, ERN2 (http://www.genenames.org/cgi-bin/gene_symbol_report?hgnc_id=16942)
target="_blank">HGNC:16942)

Target/Specificity

This ERN2 antibody is generated from rabbits immunized with a KLH conjugated synthetic peptide between 39-72 amino acids from the N-terminal region of human ERN2.

Dilution

WB~~1:1000

Format

Purified polyclonal antibody supplied in PBS with 0.09% (W/V) sodium azide. This antibody is prepared by Saturated Ammonium Sulfate (SAS) precipitation followed by dialysis against PBS.

Storage

Maintain refrigerated at 2-8°C for up to 2 weeks. For long term storage store at -20°C in small aliquots to prevent freeze-thaw cycles.

Precautions

ERN2 Antibody (N-term) is for research use only and not for use in diagnostic or therapeutic procedures.

ERN2 Antibody (N-term) - Protein Information**Name** ERN2 ([HGNC:16942](#))

Function Induces translational repression through 28S ribosomal RNA cleavage in response to ER stress. Pro-apoptotic. Appears to play no role in the unfolded-protein response, unlike closely related proteins.

Cellular Location

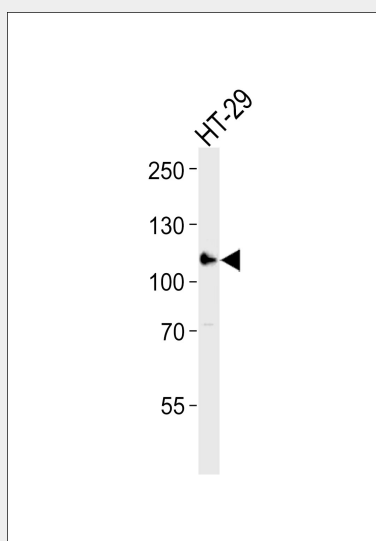
Endoplasmic reticulum membrane; Single-pass type I membrane protein

ERN2 Antibody (N-term) - Protocols

Provided below are standard protocols that you may find useful for product applications.

- [Western Blot](#)
- [Blocking Peptides](#)
- [Dot Blot](#)
- [Immunohistochemistry](#)
- [Immunofluorescence](#)
- [Immunoprecipitation](#)
- [Flow Cytometry](#)
- [Cell Culture](#)

ERN2 Antibody (N-term) - Images



Western blot analysis of lysate from HT-29 cell line, using ERN2 Antibody (N-term)(Cat. #AP7128a). AP7128a was diluted at 1:1000. A goat anti-rabbit IgG H&L(HRP) at 1:10000 dilution was used as the secondary antibody. Lysate at 35ug.

ERN2 Antibody (N-term) - Background

ERN2 induces translational repression through 28S ribosomal RNA cleavage in response to endoplasmic reticulum (ER) stress. This pro-apoptotic appears to play no role in the unfolded-protein response, unlike closely related proteins. Overexpression of ERN2 activates both BiP and CHOP expression, and also leads to the development of programmed cell death. It has been suggested that Ern2 plays a role in multiple facets of the ER stress response in mammalian cells.

ERN2 Antibody (N-term) - References

Iwawaki, T., et al., Nat. Cell Biol. 3(2):158-164 (2001).

Niwa, M., et al., Cell 99(7):691-702 (1999).

Wang, X.Z., et al., EMBO J. 17(19):5708-5717 (1998).