

NMBR Polyclonal Antibody
Catalog # AP71331**Specification****NMBR Polyclonal Antibody - Product Information**

Application	WB, IF
Primary Accession	P28336
Reactivity	Human, Mouse, Rat
Host	Rabbit
Clonality	Polyclonal

NMBR Polyclonal Antibody - Additional Information**Gene ID** 4829**Other Names**

NMBR; Neuromedin-B receptor; NMB-R; Epididymis tissue protein Li 185a;
Neuromedin-B-preferring bombesin receptor

Dilution

WB~~Western Blot: 1/500 - 1/2000. Immunofluorescence: 1/200 - 1/1000. ELISA: 1/5000. Not yet tested in other applications.

IF~~1:50~200

Format

Liquid in PBS containing 50% glycerol, 0.5% BSA and 0.09% (W/V) sodium azide.

Storage Conditions

-20°C

NMBR Polyclonal Antibody - Protein Information**Name** NMBR**Function**

Receptor for neuromedin-B (PubMed:1655761). Contributes to the maintenance of basal sigh rate through signaling in the pre- Botzinger complex, a cluster of several thousand neurons in the ventrolateral medulla responsible for inspiration during respiratory activity (By similarity). Contributes to the induction of sneezing following exposure to chemical irritants or allergens which causes release of NMB by nasal sensory neurons and activation of NMBR- expressing neurons in the sneeze-evoking region of the brainstem (By similarity). These in turn activate neurons of the caudal ventral respiratory group, giving rise to the sneezing response (By similarity). Contributes to induction of acute itch, possibly through its activation on dorsal root ganglion neurons by the NMB peptide (By similarity). Plays a role in the innate immune response to influenza A virus infection by enhancing interferon alpha expression and reducing expression of IL6 (PubMed:31601264). Plays a role in CSF1-induced proliferation of osteoclast precursors by contributing to the positive regulation of

the expression of the CSF1 receptor CSF1R (By similarity).

Cellular Location

Cell membrane; Multi-pass membrane protein

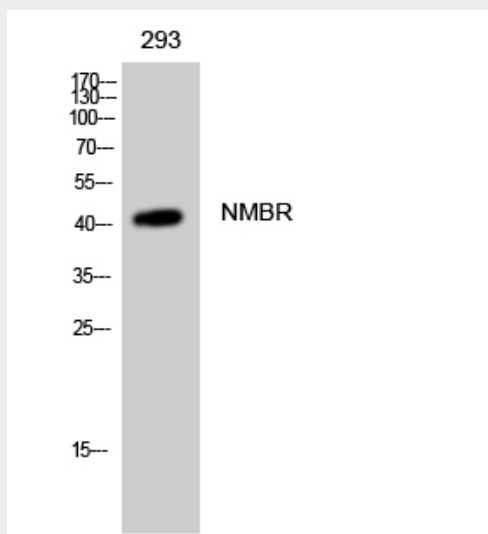
Tissue Location

Expressed in epididymis (at protein level).

NMBR Polyclonal Antibody - Protocols

Provided below are standard protocols that you may find useful for product applications.

- [Western Blot](#)
- [Blocking Peptides](#)
- [Dot Blot](#)
- [Immunohistochemistry](#)
- [Immunofluorescence](#)
- [Immunoprecipitation](#)
- [Flow Cytometry](#)
- [Cell Culture](#)

NMBR Polyclonal Antibody - Images**NMBR Polyclonal Antibody - Background**

Receptor for neuromedin-B.