

Nox5 Polyclonal Antibody
Catalog # AP71359**Specification**

Nox5 Polyclonal Antibody - Product Information

Application	WB, IHC-P
Primary Accession	Q96PH1
Reactivity	Human
Host	Rabbit
Clonality	Polyclonal

Nox5 Polyclonal Antibody - Additional Information**Gene ID** 79400**Other Names**

NOX5; NADPH oxidase 5

Dilution

WB~~Western Blot: 1/500 - 1/2000. Immunohistochemistry: 1/100 - 1/300. ELISA: 1/40000. Not yet tested in other applications.

IHC-P~~N/A

Format

Liquid in PBS containing 50% glycerol, 0.5% BSA and 0.09% (W/V) sodium azide.

Storage Conditions

-20°C

Nox5 Polyclonal Antibody - Protein Information**Name** NOX5 ([HGNC:14874](#))**Function**

Calcium-dependent NADPH oxidase that catalyzes the generation of superoxide from molecular oxygen utilizing NADPH as an electron donor (PubMed:12686516). May play a role in cell growth and apoptosis (PubMed:12686516).

Cellular Location

[Isoform v2]: Endoplasmic reticulum. Cell membrane; Multi-pass membrane protein.

Note=Calcium-sensitive association and dissociation between the N- and C-terminal domains appears to facilitate its localization to the cell membrane

Tissue Location

Mainly expressed in pachytene spermatocytes of testis and in lymphocyte-rich areas of spleen and lymph nodes. Also detected in ovary, placenta, pancreas, cardiac fibroblasts. Expressed in B-cells

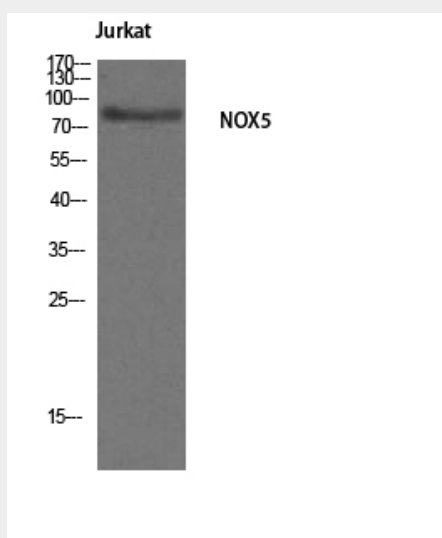
and prostate malignant cells. [Isoform v2]: Expressed in microvascular endothelial cells (at protein level) (PubMed:17275676). Expressed in testis (PubMed:11483596). Expressed in endothelial cells and pulmonary artery smooth muscle cells (PubMed:17275676, PubMed:22427510) [Isoform v4]: Expressed in endothelial cells and pulmonary artery smooth muscle cells.

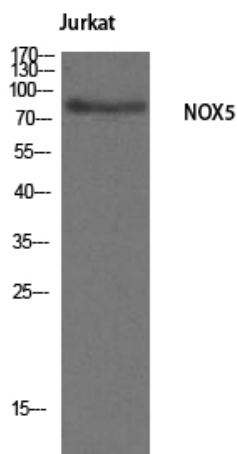
Nox5 Polyclonal Antibody - Protocols

Provided below are standard protocols that you may find useful for product applications.

- [Western Blot](#)
- [Blocking Peptides](#)
- [Dot Blot](#)
- [Immunohistochemistry](#)
- [Immunofluorescence](#)
- [Immunoprecipitation](#)
- [Flow Cytometry](#)
- [Cell Culture](#)

Nox5 Polyclonal Antibody - Images





Nox5 Polyclonal Antibody - Background

Calcium-dependent NADPH oxidase that generates superoxide. Also functions as a calcium-dependent proton channel and may regulate redox-dependent processes in lymphocytes and spermatozoa. May play a role in cell growth and apoptosis. Isoform v2 and isoform v5 are involved in endothelial generation of reactive oxygen species (ROS), proliferation and angiogenesis and contribute to endothelial response to thrombin.