

Nrl Polyclonal Antibody
Catalog # AP71376**Specification**

Nrl Polyclonal Antibody - Product Information

Application	WB
Primary Accession	P54845
Reactivity	Human, Mouse
Host	Rabbit
Clonality	Polyclonal

Nrl Polyclonal Antibody - Additional Information**Gene ID** 4901**Other Names**

NRL; D14S46E; Neural retina-specific leucine zipper protein; NRL

Dilution

WB~~Western Blot: 1/500 - 1/2000. ELISA: 1/10000. Not yet tested in other applications.

Format

Liquid in PBS containing 50% glycerol, 0.5% BSA and 0.09% (W/V) sodium azide.

Storage Conditions

-20°C

Nrl Polyclonal Antibody - Protein Information**Name** NRL**Synonyms** D14S46E**Function**

Acts as a transcriptional activator which regulates the expression of several rod-specific genes, including RHO and PDE6B (PubMed:21981118). Functions also as a transcriptional coactivator, stimulating transcription mediated by the transcription factor CRX and NR2E3 (PubMed:17335001). Binds in a sequence-specific manner to the rhodopsin promoter (PubMed:17335001).

Cellular Location

Cytoplasm. Nucleus

Tissue Location

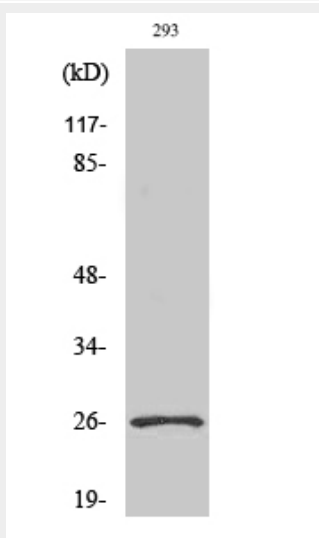
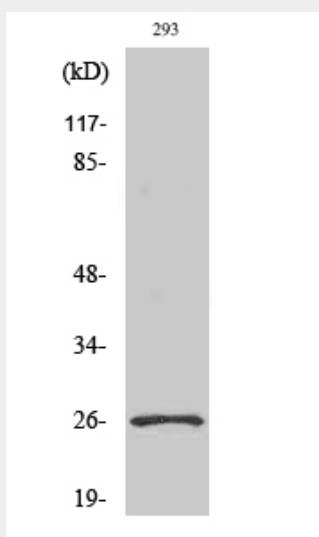
Expressed in the brain and the retina (PubMed:11477108). Expressed strongly in rod and cone cells (at protein level) (PubMed:11477108).

Nrl Polyclonal Antibody - Protocols

Provided below are standard protocols that you may find useful for product applications.

- [Western Blot](#)
- [Blocking Peptides](#)
- [Dot Blot](#)
- [Immunohistochemistry](#)
- [Immunofluorescence](#)
- [Immunoprecipitation](#)
- [Flow Cytometry](#)
- [Cell Culture](#)

Nrl Polyclonal Antibody - Images



Nrl Polyclonal Antibody - Background

Acts as a transcriptional activator which regulates the expression of several rod-specific genes, including RHO and PDE6B (PubMed:21981118). Functions also as a transcriptional coactivator, stimulating transcription mediated by the transcription factor CRX and NR2E3 (PubMed:17335001). Binds in a sequence-specific manner to the rhodopsin promoter (PubMed:17335001).