

NSF Polyclonal Antibody
Catalog # AP71378**Specification**

NSF Polyclonal Antibody - Product Information

Application	WB
Primary Accession	P46459
Reactivity	Human, Mouse, Rat
Host	Rabbit
Clonality	Polyclonal

NSF Polyclonal Antibody - Additional Information**Gene ID** 4905**Other Names**

NSF; Vesicle-fusing ATPase; N-ethylmaleimide-sensitive fusion protein; NEM-sensitive fusion protein; Vesicular-fusion protein NSF

Dilution

WB~~Western Blot: 1/500 - 1/2000. ELISA: 1/40000. Not yet tested in other applications.

Format

Liquid in PBS containing 50% glycerol, 0.5% BSA and 0.09% (W/V) sodium azide.

Storage Conditions

-20°C

NSF Polyclonal Antibody - Protein Information**Name** NSF**Function**

Required for vesicle-mediated transport. Catalyzes the fusion of transport vesicles within the Golgi cisternae. Is also required for transport from the endoplasmic reticulum to the Golgi stack. Seems to function as a fusion protein required for the delivery of cargo proteins to all compartments of the Golgi stack independent of vesicle origin. Interaction with AMPAR subunit GRIA2 leads to influence GRIA2 membrane cycling (By similarity).

Cellular Location

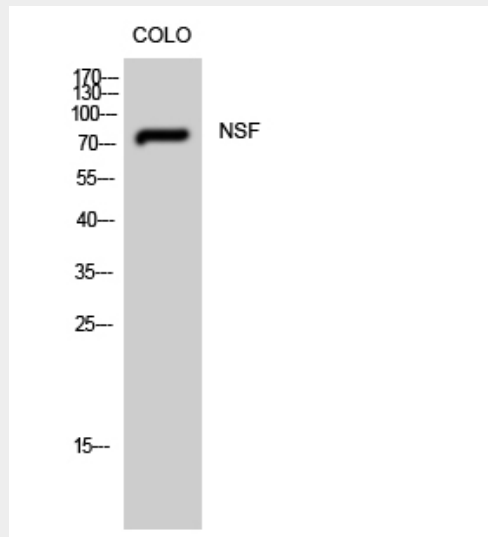
Cytoplasm.

NSF Polyclonal Antibody - Protocols

Provided below are standard protocols that you may find useful for product applications.

- [Western Blot](#)
- [Blocking Peptides](#)
- [Dot Blot](#)
- [Immunohistochemistry](#)
- [Immunofluorescence](#)
- [Immunoprecipitation](#)
- [Flow Cytometry](#)
- [Cell Culture](#)

NSF Polyclonal Antibody - Images



Western Blot analysis of CoLo cells using NSF Polyclonal Antibody

NSF Polyclonal Antibody - Background

Required for vesicle-mediated transport. Catalyzes the fusion of transport vesicles within the Golgi cisternae. Is also required for transport from the endoplasmic reticulum to the Golgi stack. Seems to function as a fusion protein required for the delivery of cargo proteins to all compartments of the Golgi stack independent of vesicle origin. Interaction with AMPAR subunit GRIA2 leads to influence GRIA2 membrane cycling (By similarity).