

**NTF2 Polyclonal Antibody**  
**Catalog # AP71384****Specification**

---

**NTF2 Polyclonal Antibody - Product Information**

Application	WB
Primary Accession	<a href="#">P61970</a>
Reactivity	Human, Mouse, Rat
Host	Rabbit
Clonality	Polyclonal

**NTF2 Polyclonal Antibody - Additional Information****Gene ID** 10204**Other Names**

NUTF2; NTF2; Nuclear transport factor 2; NTF-2; Placental protein 15; PP15

**Dilution**

WB~~Western Blot: 1/500 - 1/2000. Immunohistochemistry: 1/100 - 1/300. ELISA: 1/20000. Not yet tested in other applications.

**Format**

Liquid in PBS containing 50% glycerol, 0.5% BSA and 0.09% (W/V) sodium azide.

**Storage Conditions**

-20°C

**NTF2 Polyclonal Antibody - Protein Information****Name** NUTF2 ([HGNC:13722](#))**Function**

Mediates the import of GDP-bound RAN from the cytoplasm into the nucleus which is essential for the function of RAN in cargo receptor-mediated nucleocytoplasmic transport. Thereby, plays indirectly a more general role in cargo receptor-mediated nucleocytoplasmic transport. Interacts with GDP-bound RAN in the cytosol, recruits it to the nuclear pore complex via its interaction with nucleoporins and promotes its nuclear import.

**Cellular Location**

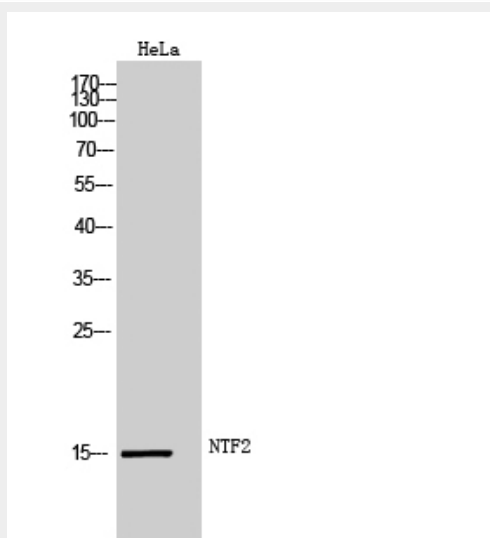
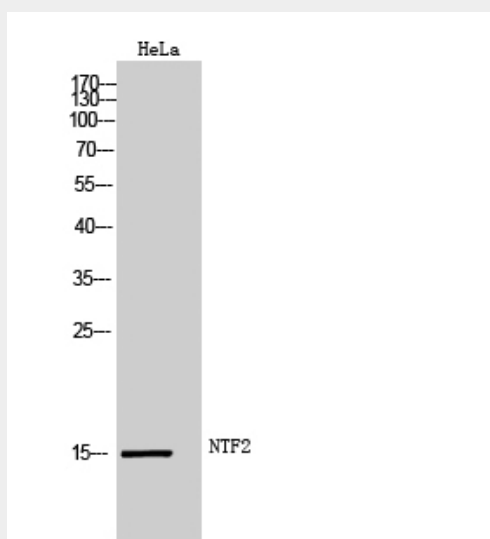
Cytoplasm, cytosol. Nucleus outer membrane {ECO:0000250|UniProtKB:P61972}. Nucleus, nuclear pore complex {ECO:0000250|UniProtKB:P61972}. Nucleus inner membrane {ECO:0000250|UniProtKB:P61972}. Nucleus, nucleoplasm. Note=At steady state it is essentially nucleoplasmic, enriched in nucleoplasmic foci

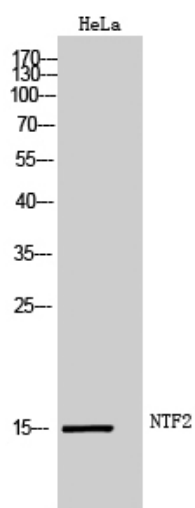
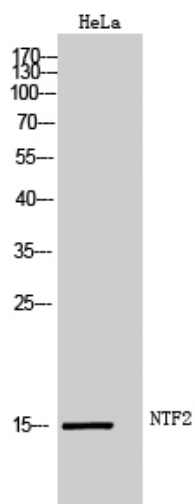
**NTF2 Polyclonal Antibody - Protocols**

Provided below are standard protocols that you may find useful for product applications.

- [Western Blot](#)
- [Blocking Peptides](#)
- [Dot Blot](#)
- [Immunohistochemistry](#)
- [Immunofluorescence](#)
- [Immunoprecipitation](#)
- [Flow Cytometry](#)
- [Cell Culture](#)

#### **NTF2 Polyclonal Antibody - Images**





### NTF2 Polyclonal Antibody - Background

Mediates the import of GDP-bound RAN from the cytoplasm into the nucleus which is essential for the function of RAN in cargo receptor-mediated nucleocytoplasmic transport. Thereby, plays indirectly a more general role in cargo receptor-mediated nucleocytoplasmic transport. Interacts with GDP-bound RAN in the cytosol, recruits it to the nuclear pore complex via its interaction with nucleoporins and promotes its nuclear import.