

LYK5 Antibody (C-term)
Purified Rabbit Polyclonal Antibody (Pab)
Catalog # AP7142B**Specification**

LYK5 Antibody (C-term) - Product Information

Application	WB,E
Primary Accession	Q7RTN6
Reactivity	Human
Host	Rabbit
Clonality	Polyclonal
Isotype	Rabbit IgG
Calculated MW	48369
Antigen Region	364-393

LYK5 Antibody (C-term) - Additional Information**Gene ID** 92335**Other Names**

STE20-related kinase adapter protein alpha, STRAD alpha, STE20-related adapter protein, Serologically defined breast cancer antigen NY-BR-96, STRADA, LYK5
{ECO:0000312|EMBL:AAP422801}, STRAD

Target/Specificity

This LYK5 antibody is generated from rabbits immunized with a KLH conjugated synthetic peptide between 364-393 amino acids from the C-terminal region of human LYK5.

Dilution

WB~~1:1000

E~~Use at an assay dependent concentration.

Format

Purified polyclonal antibody supplied in PBS with 0.09% (W/V) sodium azide. This antibody is prepared by Saturated Ammonium Sulfate (SAS) precipitation followed by dialysis against PBS.

Storage

Maintain refrigerated at 2-8°C for up to 2 weeks. For long term storage store at -20°C in small aliquots to prevent freeze-thaw cycles.

Precautions

LYK5 Antibody (C-term) is for research use only and not for use in diagnostic or therapeutic procedures.

LYK5 Antibody (C-term) - Protein Information**Name** STRADA

Synonyms LYK5 {ECO:0000312|EMBL:AAP42280.1}, STRA

Function Pseudokinase which, in complex with CAB39/MO25 (CAB39/MO25alpha or CAB39L/MO25beta), binds to and activates STK11/LKB1. Adopts a closed conformation typical of active protein kinases and binds STK11/LKB1 as a pseudosubstrate, promoting conformational change of STK11/LKB1 in an active conformation.

Cellular Location

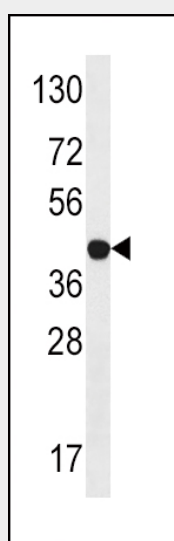
Nucleus. Cytoplasm

LYK5 Antibody (C-term) - Protocols

Provided below are standard protocols that you may find useful for product applications.

- [Western Blot](#)
- [Blocking Peptides](#)
- [Dot Blot](#)
- [Immunohistochemistry](#)
- [Immunofluorescence](#)
- [Immunoprecipitation](#)
- [Flow Cytometry](#)
- [Cell Culture](#)

LYK5 Antibody (C-term) - Images



The anti-LYK5 Pab (Cat. #AP7142b) is used in Western blot to detect LYK5 in Jurkat tissue lysate

LYK5 Antibody (C-term) - Background

LYK5, also STE20-related Adaptor Protein (STRAD) are members of STE-20 like kinase family that are known to stimulate MAPK pathways by directly activating MAPKKK. LYK5 is a novel pseudokinase member of this family consisting of a STE-20 like kinase domain but lacks several residues that are required for its catalytic activity. It specifically binds LKB1 and plays a key role in regulating tumor suppressor activities of LKB1. It functions as an upstream activator of LKB1 and also directs the sub-cellular localization of LKB1 by anchoring it in the cytoplasm. STRAD-LKB1 interaction results in phosphorylation of STRAD and enhanced autophosphorylation of LKB1.