

PANK1 Antibody (N-term)
Purified Rabbit Polyclonal Antibody (Pab)
Catalog # AP7159a

Specification

PANK1 Antibody (N-term) - Product Information

Application	WB,E
Primary Accession	Q8TE04
Reactivity	Human, Mouse
Host	Rabbit
Clonality	Polyclonal
Isotype	Rabbit IgG
Antigen Region	75-105

PANK1 Antibody (N-term) - Additional Information

Gene ID 53354

Other Names

Pantothenate kinase 1, hPanK, hPanK1, Pantothenic acid kinase 1, PANK1, PANK

Target/Specificity

This PANK1 antibody is generated from rabbits immunized with a KLH conjugated synthetic peptide between 75-105 amino acids from the N-terminal region of human PANK1.

Dilution

WB~~1:1000

Format

Purified polyclonal antibody supplied in PBS with 0.09% (W/V) sodium azide. This antibody is prepared by Saturated Ammonium Sulfate (SAS) precipitation followed by dialysis against PBS.

Storage

Maintain refrigerated at 2-8°C for up to 2 weeks. For long term storage store at -20°C in small aliquots to prevent freeze-thaw cycles.

Precautions

PANK1 Antibody (N-term) is for research use only and not for use in diagnostic or therapeutic procedures.

PANK1 Antibody (N-term) - Protein Information

Name PANK1

Synonyms PANK

Function [Isoform 1]: Catalyzes the phosphorylation of pantothenate to generate 4'-phosphopantothenate in the first and rate-determining step of coenzyme A (CoA) synthesis.

Cellular Location

Cytoplasm. [Isoform 2]: Cytoplasm, cytosol. Cytoplasmic vesicle, clathrin-coated vesicle. Recycling endosome

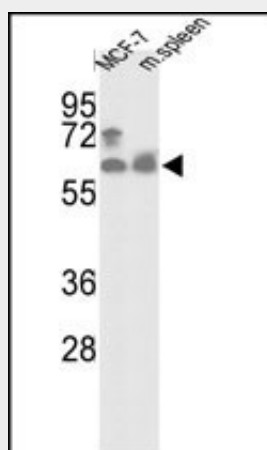
Tissue Location

[Isoform 1]: Expressed at high levels in brain, heart, kidney, liver, skeletal muscle and testis

PANK1 Antibody (N-term) - Protocols

Provided below are standard protocols that you may find useful for product applications.

- [Western Blot](#)
- [Blocking Peptides](#)
- [Dot Blot](#)
- [Immunohistochemistry](#)
- [Immunofluorescence](#)
- [Immunoprecipitation](#)
- [Flow Cytometry](#)
- [Cell Culture](#)

PANK1 Antibody (N-term) - Images

Western blot analysis of hPANK1-R90 (Cat.# AP7159a) in MCF-7 cell line and mouse spleen tissue lysates (35ug/lane). PANK1 (arrow) was detected using the purified Pab.

PANK1 Antibody (N-term) - Background

PANK1 belongs to the pantothenate kinase family. Pantothenate kinase is a key regulatory enzyme in the biosynthesis of coenzyme A (CoA) in bacteria and mammalian cells. It catalyzes the first committed step in the universal biosynthetic pathway leading to CoA and is itself subject to regulation through feedback inhibition by CoA.

PANK1 Antibody (N-term) - References

Ramaswamy, G., et al., J. Lipid Res. 45(1):17-31 (2004).
Ni, X., et al., Int. J. Biochem. Cell Biol. 34(2):109-115 (2002).
Zhou, B., et al., Nat. Genet. 28(4):345-349 (2001).
Westaway, S.K., et al., Int. J. Biochem. Cell Biol. 34 (12), 1629 (2002) (): ().
Robishaw, J.D., et al., Am. J. Physiol. 248 (1 PT 1), E1-E9 (1985) (): ().